

# **Report for Application of Wong Tai Sin Safe Community**

*To become a Member of the  
International Safe Community Network for  
International Designation as a Safe Community by  
the WHO Collaborating Center on  
Community Safety Promotion*

**Wong Tai Sin District Healthy and Safe City**



Hong Kong

January 2011

# Content

## 1. Introduction

- 1.1 History of Wong Tai Sin District** (Page 3)
- 1.2 District Profile and Demographics Characteristics** (Page 4-10)
- 1.3 Wong Tai Sin District Council and the District Hospitals**
  - 1.3.1 Wong Tai Sin District Council (WTSDC)** (Page 11)
  - 1.3.2 Buddhist Hospital (BH)** (Page 12)
  - 1.3.3 Our Lady of Maryknoll Hospital (OLMH)** (Page 13)
  - 1.3.4 TWGHs Wong Tai Sin Hospital (TWGHs WTSH)** (Page 14)
- 1.4 Background of the Designation of Wong Tai Sin Safe Community**
  - 1.4.1 The Strategic Directions** (Page 15)
  - 1.4.2 The Key Objectives** (Page 15-16)

## 2. Safe Communities Indicators

- 2.1 Indicator 1:** An infrastructure based on partnership and collaborations, governed by a cross-sectional group that is responsible for safety promotion in their community (Page 17-23)
- 2.2 Indicator 2:** Long term, sustainable program covering both genders and all ages, environments and situations (Page 24-63)
- 2.3 Indicator 3:** Programs that target high-risk groups and environments, and programs that promotes safety for vulnerable groups (Page 64-75)
- 2.4 Indicator 4:** Programs that document the frequency and causes of injuries (Page 76-84)
- 2.5 Indicator 5:** Evaluation measures to assess their programs, processes and effects of change (Page 85-88)
- 2.6 Indicator 6:** Ongoing participations in national and international safe Communities networks (Page 89-94)

## 3. Conclusion and the Way Forward

- 3.1 Conclusion** (Page 95-96)
- 3.2 The Way Forward** (Page 96-98)

# **1. Introduction**

## **1.1 History of Wong Tai Sin District**

Wong Tai Sin District is one of the 18 administrative districts in Hong Kong and takes its name from the famous Wong Tai Sin Temple, a landmark of the District. Over the years, Wong Tai Sin has been transformed from a plain and simple rural village to a district with well-developed public housing estates and a population of 440,000.

As early as 1684, in the Ching Dynasty, the Villages of Ngai Chin Wai, Po Kong and Ngau Chi Wan were recorded within the present Wong Tai Sin area.

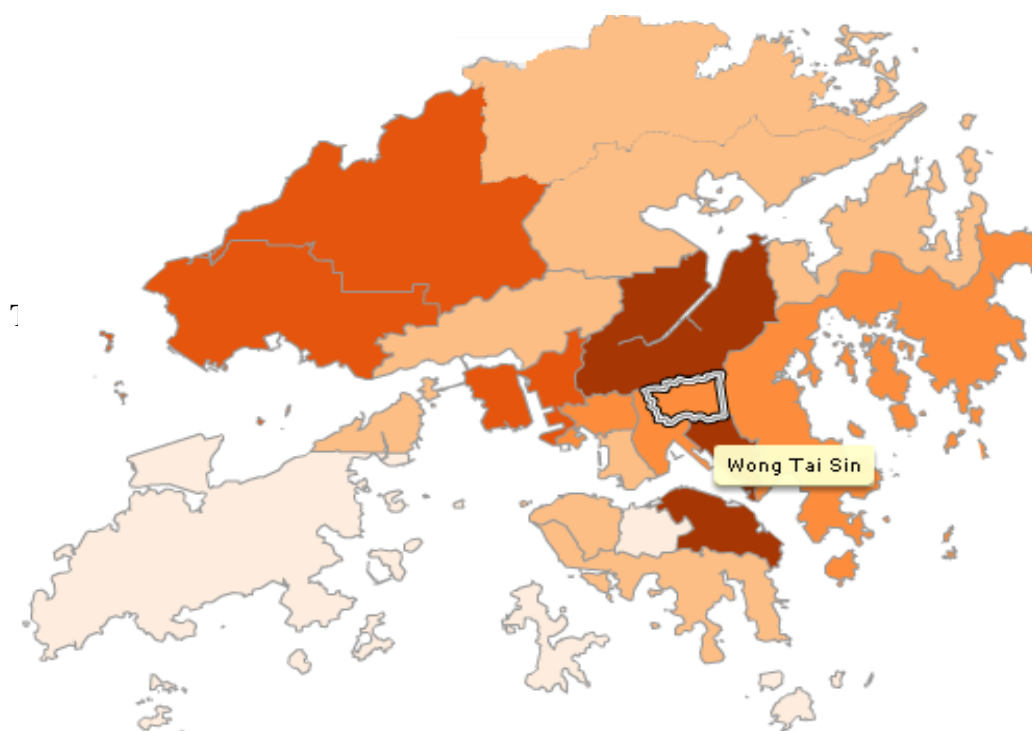
In 1860, under the Peking Treaty, the areas south of Boundary Street in the Kowloon Peninsula were rendered as colony of the British Government for 99 years. Wong Tai Sin area was not a separate administrative zone but was included in Kowloon City District. During the period of Japanese Occupation (December 1941 – August 1945), much damage had been done to the villages of the Wong Tai Sin area by the Japanese army as a result of the military need to expand the Kai Tak Airport and the enhancement of its security.

In the 50 years since the end of the Second World War, more proactive “localization” administrative plans were implemented by the British Government and more Chinese citizens were recruited into the Civil Servant system. Such “reform” was heralded by the “Young Plan” proposed by the Governor, Sir Young, in 1946. With the gradual increase in population, consisting mainly of immigrants from Mainland China, Hong Kong Island was administered under 4 districts and Kowloon under 6 districts, with the New Territories sub-grouped into 7 management offices.

On 24<sup>th</sup> January 1969, Wong Tai Sin District came into its official being and became a distinct district out of the 18 districts in January 1981. The Wong Tai Sin District Council was established on 6<sup>th</sup> May in the same year. From 1982 onwards, Council members were being elected by local citizens who performed a “bridging” function between the Government and the local community in the District. (Reference based on “黃大仙區風物志”- Published by the Wong Tai Sin District Council in March, 2003 – in Chinese).

## 1.2 District Profile and Demographics Characteristics

Wong Tai Sin District now covers an area of 926 hectares lying to the northeast of the Kowloon Peninsula. It is bounded by the Lion Rock Mountain (Sze Chi Shan) and the Tate's Cairn (Tai Lo Shan) to the north; the Kowloon Peak (Fei Ngor Shan) to the east; New Clear Water Bay Road and Prince Edward Road East to the south; and Junction Road and the Lion Rock Tunnel to the west. The district contains the areas of Diamond Hill, Wang Tau Hom, Lok Fu, Chuk Yuen, Wong Tai Sin, Tsz Wan Shan, Fung Wong, Choi Hung and Choi Wan, an area that includes several major public housing estates. The District is the only **administrative district in Hong Kong without a coastline.**

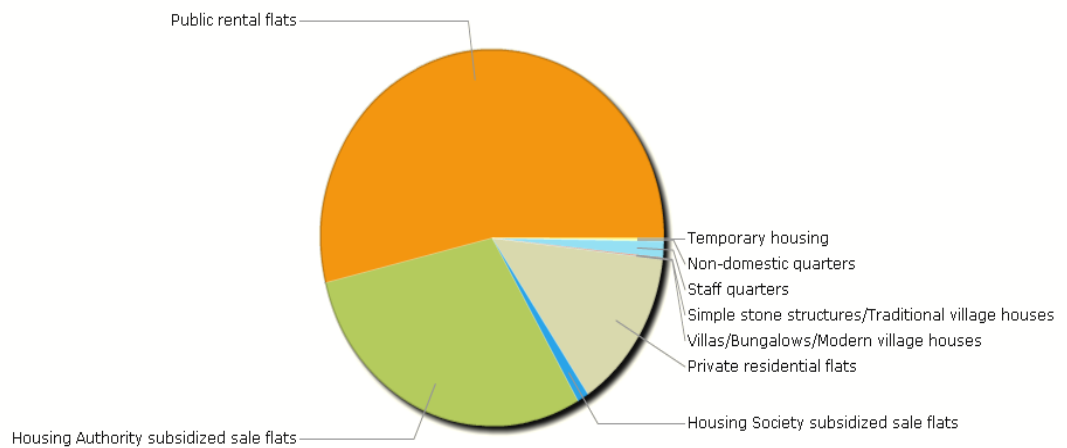


The District used to be a predominately rural area sparsely populated by natives of Pun U and Hakka origin. It became part of New Kowloon in 1937. With the arrival of a large number of refugees from Mainland China to Hong Kong in the late 1940s, numerous squatter huts began to emerge in the District. Construction of public housing in the District started in 1957 with the first resettlement block of the Mark I type built at Lo Fu Ngan (later renamed as Lok Fu). Over the years, the District has undergone a facelift with the gradual clearance of its squatter areas and redevelopment of its public housing estates.

Wong Tai Sin District is **characterized by extensive public housing**.

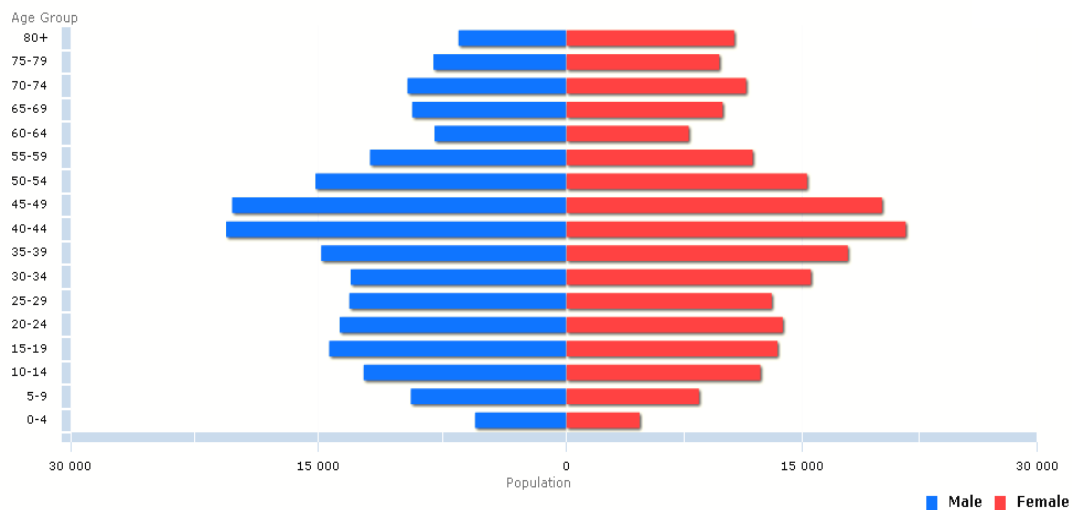


Occupied Quarters by Type of Quarters, 2006 - Wong Tai Sin

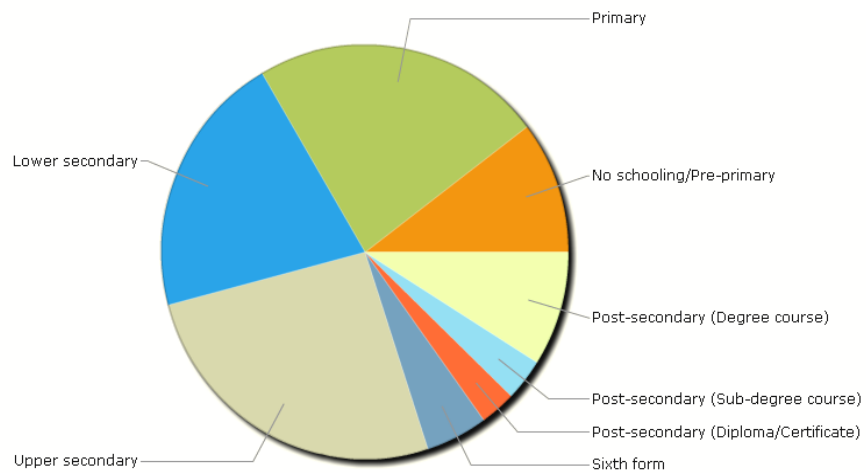


The district has the least educated residents with the **lowest income**, the **oldest residents** and the **second highest population density** (All statistical graphic presentations are retrieved from the database of the 2006 Population By-census of the Department of Statistics of the Government of Hong Kong Special Administrative Region).

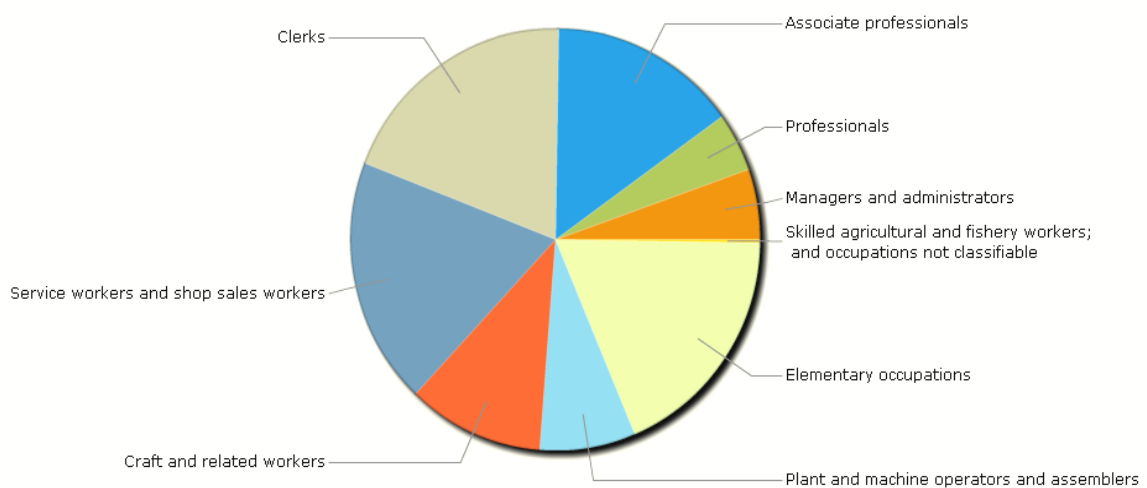
Population by Age Group, 2006 - Wong Tai Sin



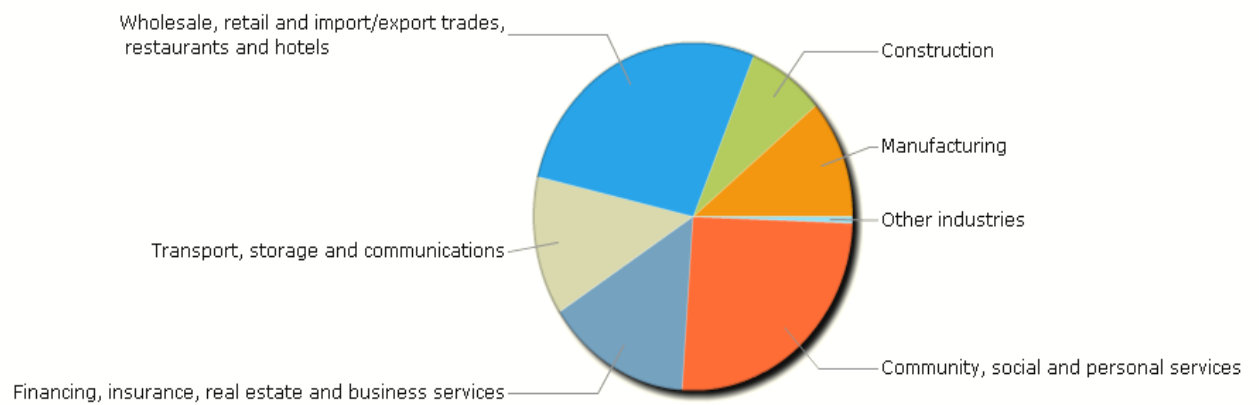
Population Aged 15 and Over by Educational Attainment (Highest Level Attended), 2006 - Wong Tai Sin



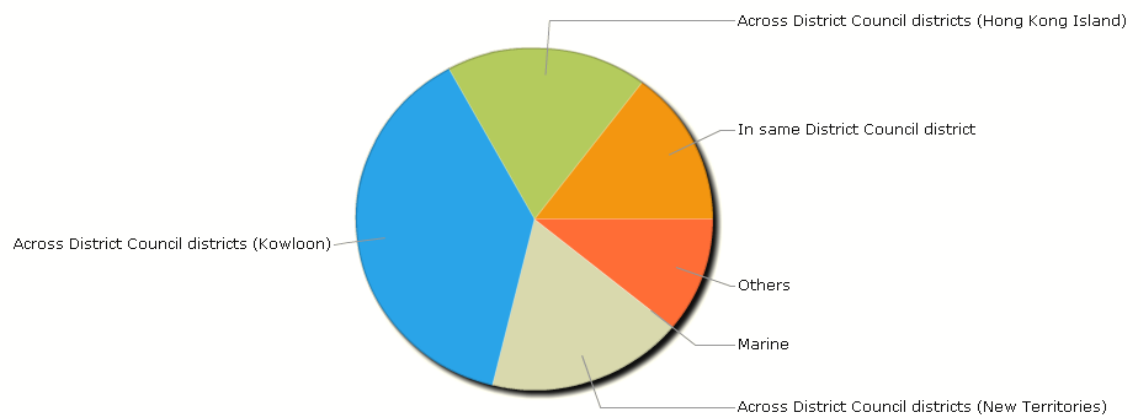
Working Population by Occupation, 2006 - Wong Tai Sin



### Working Population by Industry, 2006 - Wong Tai Sin



### Working Population by Place of Work, 2006 - Wong Tai Sin



## **Places of interest:**

### **Wong Tai Sin Temple**



One of the most renowned temples in Hong Kong and also enjoys great reputation overseas. According to legend, Wong Tai Sin (also known as Deity of Red Pine Hill) is well-known for his capability in curing people and his benevolence. He is also able to satisfy all requests and his predictions always come true. Besides, the Temple is the only Taoist temple in Hong Kong authorized to hold Taoist wedding.

At the end of the Lunar year and on the first fifteen days of the Lunar New Year, the Temple is crowded with worshippers who come to give thanks to Wong Tai Sin for his blessing in the past year and pray for his blessing in the coming year. The 23rd day of the 8th Lunar month is the birthday of Wong Tai Sin. On that day, all his disciples will assemble at the Main Altar of the Temple at noon for a worshipping ceremony.



## Chi Lin Nunnery



A scenic spot with increasing popularity and renowned both in Hong Kong and abroad. As a result of a redevelopment project in 1989, Chi Lin Nunnery has now become a grand Monastery Complex built in the architectural style of the Tang Dynasty.

Opened to the public since May 2000, this stately and traditional Monastery Complex is believed to become a valued cultural heritage of China in the years to come. On the 8th day of the 12th Lunar month and the 15th day of the 1st Lunar month, the Nunnery will hold ceremonies for thanksgiving for the past year and blessing for the coming year. Besides, on the 8th day of the 4th Lunar month, the Nunnery will hold a ceremony to celebrate the birthday of the Buddha.

## Nga Tsin Wai Village



A place of historic interest: the origin of the Villagers dated back to the end of the Nan Song Dynasty. The Village is among the oldest villages in Kowloon and is the only traditional Chinese fortified village in the urban area still remaining intact in terms of the village houses, the Clan Hall and the Tin Hau Temple. According to hearsay, there were a watchtower, a moat and a drawbridge. The moat was filled up during the Japanese occupation period to facilitate the transportation of construction materials to build the airport. The drawbridge only existed during the days of the less peaceful times. Two cannons, which had been installed to defend the Village, were buried near the entrance.

Once every ten years (normally at the end of the 10th Lunar month), the Nga Tsin Wai Village will celebrate the remarkable Tai Ping Ching Chiu (Da Chiu) to provide the villagers with an opportunity to make thanksgiving to Tin Hau for pacifying and driving away spirits, thereby endowing the villagers with peace and blessing. The first Da Chiu ceremony started in 1726 and the latest one was held in 1996. The celebration usually lasts for a couple of days, with villagers paying homage to Tin Hau and participants enjoying episodes of puppet shows and Chinese opera performances. Vegetarian food is served during these few days.

## **1.3 Wong Tai Sin District Council and the District Hospitals**

### **1.3.1 Wong Tai Sin District Council (WTSDC)**



There are six Committees under WTSDC, namely the Community Building and Social Services Committee, the District Facilities Management Committee, the Traffic and Transport Committee, the Finance, General and Economic Affairs Committee, the Housing Committee and the Food and Environmental Hygiene Committee. In order to build a better living environment for the residents of the Wong Tai Sin District, the 31 members of WTSDC will continue to reflect the public opinions to the Government on matters related to the community facilities, environmental hygiene, traffic and transport, housing policies and improvements to the living environment of the district through regular meetings of WTSDC and its Committees.

Besides, WTSDC will be actively using Government funds to carry out community building and involvement programmes to foster the community spirit of the local residents. We will also work towards the target of improving the local living environment through our minor environment improvement projects.

The WTSDC serves the residents of the Wong Tai Sin District and enhances the communication between the Government and the public by collecting the public views through the mechanism of the District Council, daily contact or any other means and suggest improvement measures to the Government. An Internet homepage is designed to provide platform for resident to have a better understanding of WTSDC and its work ([www.districtcouncils.gov.hk/wts/english/welcome.htm](http://www.districtcouncils.gov.hk/wts/english/welcome.htm)).

### 1.3.2 Buddhist Hospital



Founded by the Hong Kong Buddhist Association in 1970, the Hospital's mission is to provide holistic care to its patients and community with Buddhist compassion and philosophy. The scope of its work now encompasses a wide range of inpatient and outpatient services. It is a community hospital with 285 beds.

Scope of Services of the Hospital include in-patient services such as Medicine, Convalescence, hospice/palliative care; out-patient services such as General out-patient clinic, Medicine, Ear, Nose and Throat (ENT), gynecology, hospice/palliative care; and other services such as pharmacy, physiotherapy, occupational therapy, diagnostic radiology, medical laboratory, medical social work, community nursing, volunteer service, health education and Traditional Chinese Medicine Clinics.

### 1.3.3 Our Lady of Maryknoll Hospital



Founded by the Maryknoll Sisters in 1961, the Hospital has a Catholic ethos that focuses on total care for the physical, social, psychological and spiritual needs of its inpatients, outpatients and ambulatory patients. It also offers Community Specialist Services via a public-private interface programme, as well as private convalescent beds for discharged palliative care patients.

Scope of Services of the Hospital include Specialties such as Medicine, Surgery, Gynaecology, Paediatrics, Geriatrics, Anaesthesia, Palliative Care, Family Medicine, Ear, Nose and Throat (ENT), Orthopaedics, Chest, Cardiology, Endocrinology and Diabetes Mellitus, Gastroenterology and Hepatology, Urology; other services include Radiodiagnosis, ultrasound scanning, clinical pathology, community nursing, physiotherapy, occupational therapy, medical social work, pastoral ministry, electrodiagnostic, dietetics, outreach service, centre of diabetes education and management, integrated community health promotion centre.



### 1.3.4 TWGHs Wong Tai Sin Hospital



Established by the Tung Wah Group of Hospitals in 1965, this extended-care and Tuberculosis and Chest institution focuses on providing intensive trans-disciplinary rehabilitative training programmes that enable its patients to reintegrate into society. It has also developed special programmes to care for people with chronic chest diseases, physical handicaps and complicated geriatric problems. In addition, it treats patients with tuberculosis and subacute chest diseases. The Hospital is also equipped with Sleep Laboratory and Assessment Centre For Fitness To Fly – Integrated Lung Function Laboratory to provide comprehensive services. Its Geriatric Day Hospital ensures continuity of care and treatment for discharged elderly patients, so that they can reintegrate into their family and the community. The hospital has established BMCPCC Palliative Care Centre in February 2009. The Centre provides comprehensive healthcare services to the patients with end-stage organ failure and cancer to meet the physical, psycho-social and spiritual needs of patients and families. With support of BMCPCC and TWGHs, the Hospital provides Traditional Chinese Medicine (TCM) with Western Medicine for terminal cancers patients in one of the wards. The service aims to promote the quality of life of patients and alleviate symptoms. Closer collaboration and integration with TCM is scheduled in phase, building on experience gained at the initial stage.

Scope of Services include specialties such as Tuberculosis and Chest, Convalescent care for Medicine, Geriatrics, Surgical and Orthopaedic patients, Rehabilitation for pulmonary, stroke, geriatric and orthopaedic patients, Geriatric Day Hospital, Hospice and Palliative Medicine, Infirmary Care and other services such as physiotherapy, medical social work, speech therapy, podiatry, dietetics, pharmacy, prosthetics and orthotics.

## **1.4 Background of the Designation of Wong Tai Sin Safe Community**

### **1.4.1 The Strategic Directions**

- To develop culture and environment conducive to building of a “Healthy and Safe Wong Tai Sin District”;
- To develop an infrastructure based on partnership and collaborations; accountable to formulation of strategies for health and safety promotion in the District;
- To develop sustainable, long-term programmes covering two genders and all ages, environments and situations;
- To synergize community resources and concert efforts for the betterment of change and innovations conducive to a “Healthy and Safe Wong Tai Sin District”;
- To network with national and international counterparts under the World Health Organization for experience sharing.

### **1.4.2 The Key Objectives**

- Through community participation and multi-sectorial collaboration, to promote holistic health among residents of Wong Tai Sin District so as to build up Wong Tai Sin District into a healthy city with healthy living environment enabling the residents living there in to maintain their quality daily living and develop their highest potential.
- To launch programmes to identify the major health problems faced by the local community and to promote their health awareness by emphasizing not only on physical health aspects but also their mental, social, and psychological well-being and to formulate strategies and district health plan containing the action plans and proactive measures to tackle the problems and to lay down the necessary infrastructures conducive to health;
- To build up Wong Tai Sin District as a healthy and safe community as part of accredited community networking of the World Health Organization so as to promote good health and safety and to safeguard against harm, violence, suicide and force majeure for the benefits of the residents of all ages, groups and sexes in Wong Tai Sin District and all other districts and cities;

- To link up closely the various organizations in Wong Tai Sin District including, but not limited to, government departments, District Council, commercial organizations, schools, hospitals, medical clinics, local organizations and community service establishments to provide a comfortable and safe working and living environment for local resident;
- To maintain communication channels with relevant government departments and local community groups, and other interested non-government organizations to advance partnership and encourage collaborative efforts in making a healthy and safe Wong Tai Sin District and to collaborate with academic bodies to carry out relevant research studies to assess the existing problems and barriers to health and/or safety in the community;
- To encourage residents to participate regularly in preventive medical care; to coordinate with health issues related to other major health and sanitation policies; to encourage different skilled groups in the communities to work together to establish a health information transmission system and physical plans to promote healthy acts of residents;
- To enhance the ability of Wong Tai Sin District to identify community hazards and to launch programs to prevent and control injuries in the community and to evaluate the effectiveness of injury control interventions;
- To organize educational activities to promote the objects of the Association and to work in cooperation with World Health Organization and other international bodies;
- To consult, advise or cooperate with any other persons, government departments or non-government organizations, local or otherwise.



## **2. Safe Communities Indicators**

### **2.1 Indicator 1: An infrastructure based on partnership and collaborations, governed by a cross-sectional group that is responsible for safety promotion in their community**

**Table 2.1.1 Composition of Wong Tai Sin District Healthy and Safe City Steering and Working Committee as at 20 October 2010**

主席 Chairman	黃大仙區議會議員 Member, Wong Tai Sin District Council	史立德博士，MH，太平紳士 Dr. SHI Lop-tak, Allen, MH, JP
副主席 Vice-chairman	東華三院黃大仙醫院醫院行政總監 Hospital Chief Executive, TWGHs Wong Tai Sin Hospital	鄧燦洪醫生 Dr. TANG Chang-hung, Lawrence
董事 Directors	黃大仙民政事務專員 District Officer, Wong Tai Sin District Office	蕭偉全太平紳士 Mr. SHIU Wai-chuen, William, JP
	東九龍居民委員會有限公司董事會主席 Chairman of the Board, East Kowloon District Residents' Committee Limited	李德康先生，MH，太平紳士 Mr. LI Tak-hong, MH, JP
	東華三院黃大仙醫院復康醫療護理部顧問醫生 主管 Consultant in-charge, (Rehabilitation & Extended Care) TWGHs Wong Tai Sin Hospital	蘇浩培醫生 Dr. SO Ho-pui
	聖母醫院醫院行政總監 Hospital Chief Executive, Our lady of Maryknoll Hospital	黃德祥醫生 Dr. WONG Tak-cheung
	勞工及福利局康復諮詢委員會主席 Chairman of Rehabilitation Advisory Committee, Labour & Welfare Bureau	許宗盛先生，BBS，MH，太平紳士 Mr. HUI Chung-shing, BBS，MH, JP
	黃大仙區議會地區設施管理委員會主席 Chairman of District Facilities Management Committee, Wong Tai Sin District Council	簡志豪先生，BBS，MH Mr KAN Chi-ho, BBS, MH
	嗇色園董事會主席 Chairman of the Board, Sik Sik Yuen	李耀輝先生 Mr. LEE Yiu-fai
	職業安全健康局總幹事 Executive Director, Occupational Safety & Health Council	鄧華勝先生 Mr. TANG Wah-shing
	黃大仙區康樂體育會主席 Chairman, Wong Tai Sin District Recreation and Sports Council	馮光中先生，BBS，太平紳士 Mr. FUNG Kwong-chung, BBS, JP

成員 Member	東華三院黃大仙醫院復康暨社區服務部門運作經理 Department Operations Manager, TWGHs Wong Tai Sin Hospital	鄧鳳琪女士 Ms. TANG Fung-ki, Ivy
	黃林梁郭會計師事務所有限公司 Wong Lam Leung & Kwok C.P.A. Limited	黃龍德太平紳士 Mr. Partick Wong, PhD, BBS, JP
	黃大仙民政事務處高級聯絡主任(2) Senior Liaison Officer, Wong Tai Sin District Office	彭淑華女士 Ms. Pang Suk-wah, Phyllis
	黃大仙民政事務處聯絡主任主管(活動) LO I/C(Campaign), Wong Tai Sin District Office	胡偉光先生 Mr. Wu Wai-kwong, Wilson
	黃大仙民政事務處聯絡主任(活動)1 LO(Campaign)1, Wong Tai Sin District Office	謝德生先生 Mr. Tse Tak-sang, Dickson
	黃大仙區議會高級行政主任 Senior Executive Officer, Wong Tai Sin District Council	蘇梁愛華女士 Mrs Teresa SOH
	聖母醫院家庭醫學統籌 Our lady of Maryknoll Hospital, Family Medicine Coordinator	陳韻宜醫生 Dr. CHAN Wan-ye, Winnie
	香港佛教醫院醫院行政總監 Hospital Chief Executive, Hong Kong Buddhist Hospital	卓贊醫生
	職業安全健康局宣傳主任 Publicity Officer, Occupational Safety & Health Council	馬慕冰女士 Ms Cecilia Ma
	職業安全健康局高級顧問 Senior Consultant, Occupational Safety & Health Council	袁志明先生 Mr Jimmy Yuen
	聖約翰救傷會訓練經理 Training Manager, Hong Kong St. John Ambulance	浦麗君小姐 Miss Lucia PO
	醫療輔助隊行動及訓練主任 Operations & Training Officer (KE), Auxiliary Medical Service	岑炳釗先生 Mr. SHUM Bing-chiu
	社會福利署黃大仙及西貢區策劃及統籌小組社會工作主任 2 Social Work Officer (Planning & Coordinating Team) (WTS/SK)2, Social Welfare Department	植頌匡先生 Mr. TSIK Chung-hong, Joseph

教育局高級學校發展主任(黃大仙) Senior School Development Officer (WTS), Education Bureau	梁儉勤先生 Mr. LEUNG Kin-kan
康樂及文化事務署黃大仙區副康樂事務經理 2 DDL(M)(WTS)2, Leisure and Cultural Services Department	林婷婷女士 Ms. LIM Ting-ting, Sylvia
食物環境衛生署黃大仙區衛生總督察 CHI(WTS), Food and Environmental Hygiene Department	李一鳳女士 Ms. LI Yat-fung, Kathy
香港警務處黃大仙警區警民關係主任 PCRO(WTS), Hong Kong Police Force	李占安先生 Mr. LEE Jim-on
房屋署高級房屋事務經理 Senior Housing Manager(KT), Hong Kong Housing Authority	陳應輝先生 Mr. Chan Ying-fai
機電工程署機電工程師/宣傳及檢控/2 Electrical & Mechanical Engineer/Publicity & Prosecution/2, Electrical and Mechanical Services Department	袁劍笙先生 Mr YUEN Kim-sang, Vincent

### 2.1.1 Governance Mechanism and Operational Relationship of the Committee and Working Groups

The Committee holds regular meetings, once every three to four months, to deliberate on business related to policies and operational issues of health and safety programs and activities (including Safety Promotion and Injury Prevention – SPIP) of the Wong Tai Sin Healthy & Safe Community. Proposals of the Working Groups will be reported to the Committee of endorsement and advice before implementation. Adopted directives or projects will be delegated to various Working Groups which will develop, execute and evaluate the programs. Progress updates will be reported to the Committee timely for further refinements or elaboration. A bidirectional approach is employed to ensure diverse and wide coverage of health and safety topics for the betterments of our community. Annual budgets and annual plans are formulated for overall strategic development of all projects and activities.

**Table 2.1.2 Working Groups**

<b>Working Groups</b>	<b>Conveners</b>
Road Safety	Mr Kan Chi Ho
Estate & Home Safety	Dr Tang Chang Hung
School Safety	Dr Wong Tak Cheung
Elderly Safety	Dr So Ho Pui
Rehabilitative Planning	Mr Hui Chung Shing
Elderly Services	Dr Wong Tak Cheung
Community Education & Promotion	Mr Shiu Wai Chuen
Children and Adolescents Special Services	Dr Wong Tak Cheung
Community Diagnosis	Dr Tang Chang Hung

**2.1.2 Road Safety Working Group**

Memberships of this Working Group include representatives of the District Council Traffic & Transport Committee, Occupational Safety & Health Council and the District Office. Collaborations will be made with Transport Department, Highways Department and Police Force. The main task of the Group is to take appropriate follow up improvement actions for recommendations made in the Wong Tai Sin Road Safety Survey, conducted in 2008-2009.

**2.1.3 Estate & Home Safety Working Group**

Memberships of this Working Group include representatives of the District Council Housing Committee, Housing Authority, Occupational Safety & Health Council and the District Office. Collaborations will be made with TWGHs Wong Tai Sin Hospital, District Council and Fire Prevention Groups. The main task of the Group is to involve estates in the District to participate in the Safe & Healthy Estate Accreditation Scheme.

**2.1.4 School Safety Working Group**

Memberships of this Working Group include representatives of Federation of Education Workers, Education Planning Council, Occupational Safety & Health Council and the District Office. The main task of the Group is to involve schools in the District to participate in the Safe & Healthy School Scheme. It will also involve the Red Cross, St John's Ambulance and the Department of Health in promoting the Healthy School Ambassadors' Scheme.

### **2.1.5 Elderly Safety Working Group**

Memberships of this Working Group include TWGHs Wong Tai Sin Hospital, Our Lady of Maryknoll Hospital, Occupational Safety & Health Council and the District Office. Collaborations will be made with the District Community Building & Social Services Committee, Social Welfare Office and Ho Tung Old Age Home. The main task of this Working Group is to involve residential homes in the District to participate in the Safety & Healthy Residential Homes Scheme. It will also involve in the promotion of Community Fall Prevention Scheme.

### **2.1.6 Rehabilitative Planning Working Group**

Memberships of this Working Group include Federation of Handicapped Youth and the District Office. Collaborations will be made with District Council Community Building and Social Services Committee, District Council Facilities Management Committee, District Council Traffic and Transport Committee, Transport Department, Highways Department, Housing Authority and Social Welfare Department. The main task of this Working Group is to promulgate barrier-free facilities for citizens' in need.

### **2.1.7 Elderly Services Working Group**

Memberships of this working Group include TWGH's Wong Tai Sin Hospital, Our Lady of Maryknoll Hospital, Social Welfare Department and the District Office. Collaborations will be made with Hospital Authority, Sheng Kung Hui, Caritas, Yang Memorial Methodist Social Services, Sik Sik Yuen, Senior Citizen Home Safety Association and the Salvation Army. The main task of this Working Group is to provide continuous health and safety supports to elderly patients with chronic illnesses.

### **2.1.8 Community Education and Promotion Working Group**

Memberships include ABM, CLP, TWGHs Wong Tai Sin Hospital, Kowloon Federation of Associations- Wong Tai Sin Branch, Federation of Education Workers, Wong Tai Sin Recreation & Sports Council, Leisure & Cultural Services Department, Environmental Protection Department and the District Office. The main task of this Working Group is to popularize safe & healthy issues such as sports, lifestyle behaviors and cultural activities.

### **2.1.9 Children and Adolescents Special Services Working Group**

Memberships include Polytechnic University School of Optometry, Otic Foundation, Bishop Ford Memorial School, Our Lady of Maryknoll Hospital, Hospital Authority, the Federation of Education Workers, Lions Club, Heart Talk Foundation, Department of Health, Wong Tai Sin Community Health Promotion Association and the Narcotic Division, Security Bureau. The main task of this Working Group is to encourage toddlers' safety, health screening & checking such as optical and hearing testing and anti-drug campaign.

### **2.1.10 Community Diagnosis Working Group**

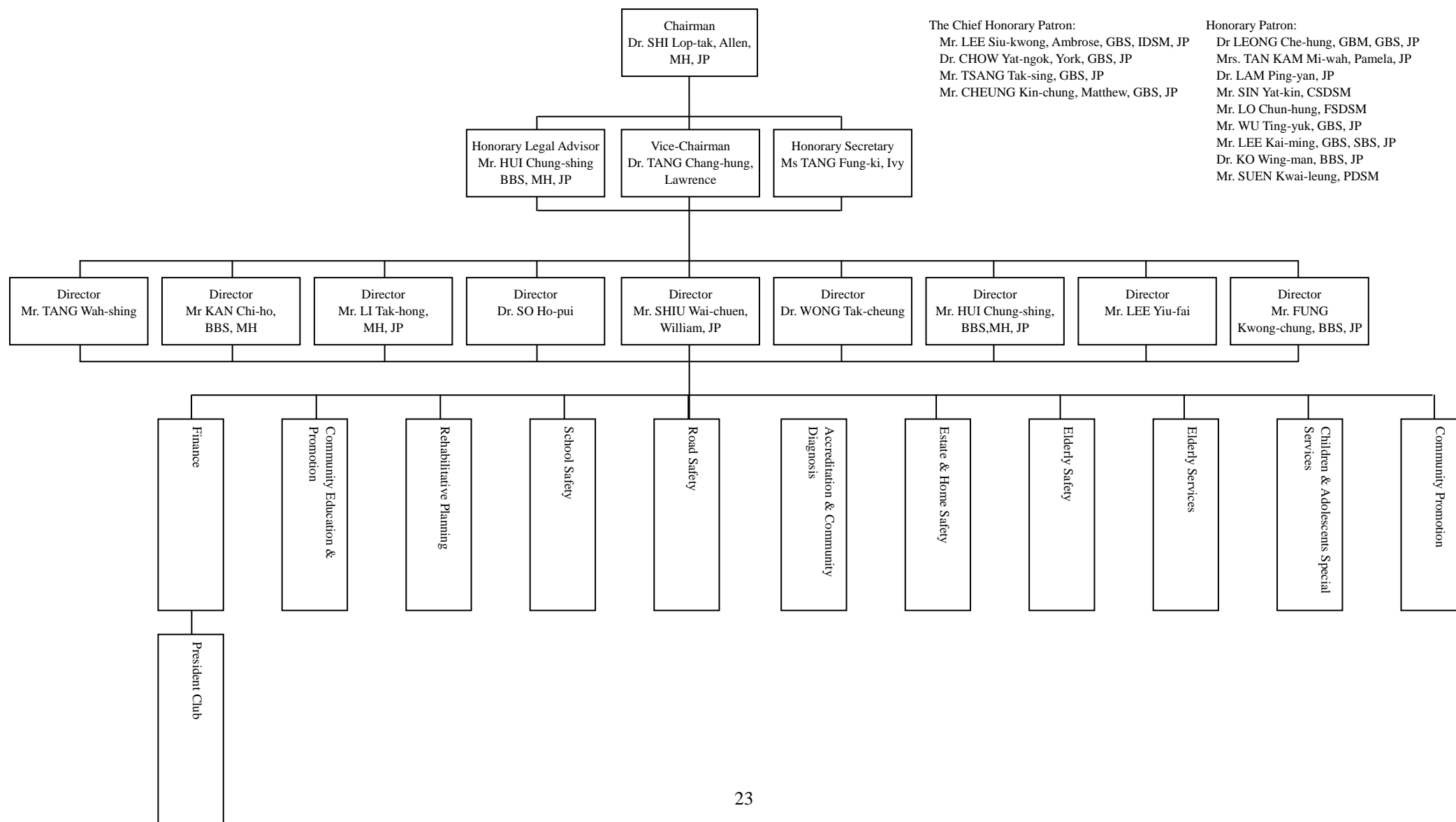
Memberships include TWGHs Wong Tai Sin Hospital, Our Lady of Maryknoll Hospital, Occupational Health & Safe Council and the District Office. Collaborations will be made with the Hospital Authority, Police Office, Fires Department and Labor Department. The Centre for Health Education and Health Promotion, Faculty of Medicine, School of Public Health & Primary Care, the Chinese University of Hong Kong has been commissioned to conduct a questionnaire survey providing a community diagnosis of the District.

**Table 2.1.3 Structural Development of Steering and Working Committee**

31 August 2007	Appointment of Board of Directors & the First Board Meeting
21 August 2008	Inauguration Ceremony
23 February 2009	The First Annual General Meeting



## Wong Tai Sin District Healthy and Safe City Organization Chart



## **2.2 Indicator 2: Long-term, sustainable programmes covering both genders and all ages, environments and situations**

In order to promote community ownership of the safe community project, a series of long-term, sustainable programmes covering both genders and all ages, environments and situations have been implemented in Wong Tai Sin district.

### **2.2.1 Road Safety**

With the Lion Rock Mountain and the Tate's Cairn bordering on the District's north, hilly slopes and steeply roads are prominent environmental hazards around the areas north of Lung Cheung Road and Po Kong Village Road affecting Tse Wan Shan, Chuk Yuen and Diamond Hill. The roads leading to the two local hospitals, Our Lady of Maryknoll and TWGHs Wong Tai Sin Hospital, are steep and narrow at certain segments, making access inconvenient and sometimes dangerous especially during rainy seasons. With the busy traffic, despite the provision of road-crossing facilities and pedestrian flyover, traffic accidents in the District is the fourth commonest injuries as coded in the computer database of the Hospital Authority's A&E Departments statistics. The number of traffic accident injuries had been kept low as reported by the Hong Kong Police Force with more than 80% being slight injuries (Page 77, Table 4.2.1). Promotion of road safety education and attention to structural road safety designs can help citizens' road safety awareness and regulation compliance and further reduce traffic accident injuries.

#### **Wong Tai Sin Road Safety Day**

Wong Tai Sin Road Safety Day has been organized by Wong Tai Sin District Council, Hong Kong Police Force and Hong Kong Road Safety Association. The function aims to promote road safety and pedestrian safety to the public. Variety shows and game booths are included. More than 5,000 participants have joined the event from 2005 - 2010.





Wong Tai Sin Road Safety Day

**Table 4 Participation of Road Safety Day from 2005 to 2010**

Year	2005 – 2006 Road Safety Day	2006 – 2007 Road Safety Day	2007 – 2008 Road Safety Day	2009 – 2010 Road Safety Day
No. of participants	810	1210	1710	2000

### **Wong Tai Sin Road Safety Patrol for the Elderly**

The Wong Tai Sin Road Safety Patrol for the Elderly (the Patrol) was formed in 2002 with the sponsorship and assistance of Wong Tai Sin District Council. The members of the Patrol are the elderly of Wong Tai Sin. The mission of the Patrol is to enhance the road safety awareness of the elderly in Wong Tai Sin. Members of the Patrol are also encouraged to develop positive values and attitudes, including self-discipline, respect for rules and regulations, fulfilling civil duties and respect for others etc. Cultivation of these values and attitudes provides a solid foundation upon which good road safety habits are built.

The Patrol consists of 40 members. They attend road safety functions in Wong Tai Sin district to disseminate road safety message.



Wong Tai Sin Road Safety Patrol for the Elderly

### **Wong Tai Sin Road Safety Survey**

Wong Tai Sin District Council Traffic and Transport Committee (T&TC) commissioned the Centre for Integrative Digital Health of the Hong Kong Polytechnic University to conduct a road safety survey in 2008 - 2009 to investigate the road safety situations and problems in Wong Tai Sin district so that improvement measures can be conducted. Quantitative and qualitative methods are adopted in the Survey, and

the opinions of residents of road safety and the adequacy and safety of traffic facilities in Wong Tai Sin district is analyzed. The relevant departments then took appropriate follow up actions and reported to T&TC.



The report of the survey can be downloaded in the website of Wong Tai Sin District Council. The link is listed below:

<http://www.districtcouncils.gov.hk/wts/chinese/welcome.htm>

Click “DC activities”; Click “Wong Tai Sin Road Safety Survey”

This Road Safety Survey forms the cornerstone for further consolidation of the recommendations made on issues revealed by the Survey. Developments of new programs to supplement/collaborate with road safety activities of government departments or other NGOs by our Road Safety Working Group is crucial in ensuring sustainability of community awareness and government commitments in providing better and more adequate traffic facilities.

Plans and measures will also be put in place to take care of the opinions collected in the Wong Tai Sin District’s Community Diagnosis Report in which 78.6% of the responders considered that the provision of transport in the District was satisfactory but same percentage of responders would like to see improvements in terms of traffic facilities.

## 2.2.2 Home & Estate Safety

Wong Tai Sin District has the second highest population density in Hong Kong and is characterized by extensive public housing and inhabiting the oldest residents' population. In addition to the provisions of proper and adequate structural facilities, building management becomes very important in safeguarding the various aspects related to Home & Estate Safety. Both the management and residents are natural partners with interactive roles to play in this common platform of Safety.

### **Quality Building Management Competition**

Wong Tai Sin District Quality Building Management Competition (QBMC) is annually organized by the Housing Committee (HC) of the Wong Tai Sin District Council (WTSDC) and Wong Tai Sin District Office (WTSDO) since 1999. Since 2008, Hong Kong Productivity Council (HKPC) has been invited to be the co-organizer of the competition.

The purpose of the competition is to promote the importance of building management, so that management organizations and residents will have higher awareness of their role in building management. Participants are divided into the following groups: 1. Public Housing Estates Group, 2. Private Residential Buildings Group, 3. Home Ownership Group and Tenants Purchase Scheme Group.

Representatives from HC, government departments and non-governmental organizations (NGOs) are invited to be the adjudicators of the competition. They will carry out site assessment (except representatives from ICAC who are responsible for documents assessment), providing comments in different areas including building management, fire safety, crime prevention, and environment hygiene.

**Table 5 Government departments and NGOs participated in the 12<sup>th</sup> QBMC.**

Government departments	WTSDO, Building Department, Electrical and Mechanical Services Department, Environmental Protection Department, Fire Services Department, Food and Environmental Hygiene Department, Housing Department, Hong Kong Police Force, Independent Commission Against Corruption, Occupational Safety and Health Council
------------------------	--



Non-governmental organizations	Chartered Institute of Housing Asian Pacific Branch, The Hong Kong Institute of Housing, The Hong Kong Institution of Engineers
--------------------------------	---



Officiating guests took a photo with representatives of all winning estates of Public Housing Estates Group and Tenants Purchase Scheme Group

**Table 6 Number of participants from the 9<sup>th</sup> to 12<sup>th</sup> QBMC**

Year	9 <sup>th</sup> (07-08)	10 <sup>th</sup> (08-09)	11 <sup>th</sup> (09-10)	12 <sup>th</sup> (10-11)
Number of participating management organizations and residents' associations	24	28	28	23( no. on 28.9.2011)

### **Safe and Healthy Estate Scheme**

Wong Tai Sin district has a large proportion of residents living in public housing estates, a “Safe and Healthy Estate Scheme” has been introduced to Wong Tai Sin district in order to strength estate management, greening, safe facilities, education on safety, etc. Tsz Hong Estate was selected as the priority estate to join the scheme of safe & healthy estate at Wong Tin Sin district. The Safe & Healthy Estate Working Group was also set up to implement this scheme.



Safe and Healthy Estate Scheme was introduced to promote estate safety.

The Estate & Home Working Group is responsible for accrediting all estates in Wong Tai Sin District in phases. The Scheme develops safe (as well as healthy) guidance (rules and regulations) on key elements including estate policy, estate organization, estate committees and community relationship, estate education and training, job related hazards, personal protection programme, health assurance programme, inspection of hazardous conditions, hazard elimination and control in physical environment, accident/incident reporting and investigation, emergency preparedness programme, selection, evaluation and control of contractors, and safe and healthy estate promotion programme. The announcement and community recognition of the accredited estate will certainly help spread the enthusiasm in all other estates in taking part in this accreditation scheme and ensure sustainability of the programmes.

It is of interest to know that in the Wong Tai Sin Community Diagnosis, a high score of 7.15 marks was reported suggesting general satisfaction of estate management in the District. 70.8% of the responders showed satisfactions on personal safety, environment safety and political safety in the District. And yet, domestic injuries were recorded as the highest cause among others in the Wong Tai Sin Injury Surveillance system. It was also reflected by some responders that objects thrown or falling from heights had happened more frequently in the 3 months prior to the Survey periods. These are issues that will need be addressed by the Working Group and other parties interested or related to Home & Estate Safety in their future improvement plans.

### 2.2.3 Fire Safety

Fire Safety promotion and activities have been well publicized and organized by the District Office and the Hong Kong Fire Services Department. The number of fire accidents in Wong Tai Sin district has steadily decreased over the years (Page 77, Table 4.3.1). Through the Safe & Healthy Estate Accreditation Scheme, the Home and Estate Safety Working Group can contribute to enhancing the awareness and handling of fire safety measures of the Wong Tai Sin residents.

#### **Fire Drill and Fire Safety Talks**

Hong Kong Fire Services Department, Wong Tai Sin District Fire Safety Committee and Wong Tai Sin District Office have to assist many buildings' owners committee and organization in organizing fire drill and fire safety talks each year.

Residents practise the evacuation of the building for a fire or other emergency in fire drills. Knowledge of Fire Safety is disseminated in fire talks.



Firemen introduced various fire fighting equipments to the participants

**Table 7 Number of Fire Drill and Fire Safety Talk**

Event \ Year	2006	2007	2008	2009	2010 (as at Aug 2010)
Fire Drill	44 (973)	55 (1758)	53 (3452)	53 (2774)	35 (1857)
Fire Safety talk	48 (1222)	56 (1677)	35 (2186)	64 (2363)	53 (2846)

Remark: ( ) no. of participants

#### **Fire Safety Ambassador Scheme**

The Fire Safety Ambassador Scheme was established in 1998 under the Community Relations Section of the Fire Services Department (FSD). The scheme recruits volunteering citizens from various sectors of the community to become Fire Safety

Ambassador (FSAs). Participants are provided with basic fire protection training to enrich their fire safety knowledge. After receiving training, participants will be appointed as a life time Fire Safety Ambassadors. The aim is to commend FSAs participating in fire safety activities and assisting the FSD in disseminating fire safety messages to the public. Up to now, Wong Tai Sin district has 8,315 ambassadors.



Fire Safety Ambassador Scheme

**Table 8 Number of Fire Safety Ambassadors**

Year	2006	2007	2008	2009	2010 (as at Aug 2010)
No. of participants	624	576	444	605	389

### **Wong Tai Sin Fire Station Open Day cum Fire Safety Carnival**

Wong Tai Sin Fire Station Open Day cum Fire Safety Carnival is one of the popular district annual activities organized by Wong Tai Sin District Fire Safety Committee, well received by the public with high turn out rate. The Carnival aims at promoting fire safety message through stage performances, firemen rescue demonstration, interactive games as well as fire and rescue equipment exhibition, is suitable for all family members.





Participants watched the fire rescue demonstration.



People enjoyed the stage performance.

**Table 9 Number of participants of Carnival**

Year	2006	2007	2008	2009	2010 (as at Aug 2010)
No. of participants	6,000	6,500	6,500	6,000	6,500

## 2.2.4 Occupational Safety

### Electrical & Mechanical Services and Occupational Safety Seminars

The Electrical & Mechanical Services and Occupational Safety Seminars have been organized by Wong Tai Sin District Council, Wong Tai Sin District Office, Hong Kong Productivity Council and supported by Occupational Safety and Health Council since 2009 to raise the knowledge of electrical and mechanical services and occupational safety for Wong Tai Sin residents so as to ensure that they are living and working in the safe environment.

The seminars introduced the practical skills of using safety kits and effective measures to provide a safe workplace for both employers and employees. The seminars held in 2009 and 2010 attracted a large number of the company representatives and Wong Tai Sin residents to attend and exchange their opinion on occupational safety.



The speaker briefed the occupational safety knowledge to the participants.



The participants shared the experience on occupational safety.

### **Other Programmes/Events to Promote Occupational Safety**

The Occupational Safety & Health Council has also implemented a series of programmes/activities to promote the safety knowledge to the public. For example, in order to prevent work related injuries and enhance the awareness on safety and health at work place, and cultivate a safe culture for the youngsters, the Occupational Safety & Health Council introduced Occupational Safety & Health Gallery at the Hong Kong Science Museum with the Leisure & Cultural Services Department. The exhibit provides an array of useful information on occupational safety and health. Citizens can gain simple but essential knowledge through the interactive multimedia computers and game to increase knowledge on safety and health at work. Many visitors including Wong Tai Sin residents come to this gallery to get the safety and health knowledge at work. Besides, the Safety Quiz 2010 Final, co-organized by the Occupational Safety and Health Council and the Labour Department was held to promote the safety knowledge.



Occupational Safety & Health Gallery

### **2.2.5 Healthy and Safe Schools**

For our school age population, a healthy formative phase in life, physically, psychologically and socially, is the key focus of our School Health & Safety Working Group together with the Children and Adolescent Special Services Working Group, they will take care of the safety issues in the schools and hopefully in their families as well. Strong collaborations with existing government or NGOs will be the strategy adopted. Youngsters must be provided with safe learning and development environments inside the schools, in the playground, in other sports or re-creative facilities. They must be protected from the harms of drugs, smoking, alcohols or the threats of the criminal groups to ensure a free and healthy foundation for future developments.

#### **Medical Care Experience in Our Lady of Maryknoll Hospital**

“Medical Care Experience in Our Lady of Maryknoll Hospital” has been organized by Wong Tai Sin District School Liaison Committee and Our Lady of Maryknoll Hospital since 2008 to let senior secondary students to have two weeks training at the hospital. The scheme help enhance students’ understanding and enthusiasm to the medical profession in order to provide the safe community. Nearly 2,000 participants have attended the event up to now.

**Table 10 Summary of participants on the event from 2008 up to now**

<b>Year</b>	<b>2008</b>	<b>2009</b>	<b>2010</b>
No. of participant	640	Suspended due to widespread influenza	1,140

#### **Happy Coach Leadership Workshop**

“Happy Coach Leadership Workshop” is a series of training programme to school principals and teachers. It aims to promote positive attitude towards happy and meaningful life and to further enhance the importance of psychological healthiness. Through various group activities, seminars, sharing sessions and discussion, the participants were trained to adopt the way of optimistic attitude towards life, which will inevitably have positive effect on their students. 150 school principals and teachers have participated in the programme since 2008.



Participants were joining team-building activities

**Table 11 Summary of participants on the event 2008-2010**

<b>Year</b>	<b>2008</b>	<b>2009</b>	<b>2010</b>
No. of participants	100	50	Planning in progress

### **‘Know Drug No Drug’ Program**

This is a series of anti-drug activities newly-organized by Wong Tai Sin District School Liaison Committee in 2009. Through visiting The Hong Kong Jockey Club Drug InfoCentre and a series of outdoor activities, the students can learn more about the harm of drug. More than 100 primary school students have participated in the event.

## 2.2.6 Prevention of Family Violence

### Publicity Campaign on “Strengthening Families & Combating Violence”

Social Welfare Department (SWD) has produced roadside display boards to disseminate messages against child abuse, spouse battering, elder abuse & sexual violence; to encourage families to seek early professional assistance; and to promote services available. The boards have been mounted at 24 locations in Wong Tai Sin District from April 2006 to December 2010.



A series of roadside display boards works for family violence prevention.

### Caring Home Together -- Community as our Family Project

The captioned Project, co-organized by SWD & NGOs, has been implemented twice since April 2009 for promoting the idea of “Family Harmony & Community Inclusion”. Children, young people, family members, the elders & disabled are trained as Care Ambassadors, who are equipped with effective communication skills, know how to get along with the others; and are willing to care for their family members and other residents. The training is followed by home visits to the disadvantaged families, which allow the Ambassadors to apply what they have learnt into practice. Harmonious Family Competition is also held to select the winners as models for other families. About 16,206 residents took part in the Project of year 2009 to 2010.





Friendship among residents was fostered during the Care Ambassadors training. They were willing to help each other to sort out problems.

### **Family Ambassadors Programme**

The captioned Programme was held triple from July 2006 to January 2009. It was co-organized by SWD & NGOs. Residents of different ages in Wong Tai Sin district were recruited to be Family Ambassadors. The trained Ambassadors not only learnt to show the care to their family members, but also to the others living in the same district. Service receivers & ambassadors gained a lot from the visit to the disadvantaged families. Over 30,000 residents took part in this Programme.



Family Ambassadors were presented with certificates of commendation for contribution to building up their families & community full of care.

### **“Strengthening Families & Combating Violence”: Neighbourhood Support for a Harmonious Community**

According to SWD, the numbers of cases of spouse battering & child abuse were more than that of elder abuse from year 2006 to 2009. To redress the problems, the captioned Programme was organized by SWD from October 2008 to March 2009. It made the participants realize that everyone could help prevent child & spouse abuse in their neighbourhood and community support was available nearby. By distribution of leaflets, drama, variety show & other education activities, residents learnt to identify spouse battering & child abuse; to recognize professional assistance for the abusers and the abused; and to advise their neighbours to seek help from child care services or other types of support services if necessary. There were over 1,000 participants.

With the implementation of the Programme, the numbers of cases of spouse battering decreased from 658 in 2008 to 339 in 2009.

### **“Strengthening Families & Combating Violence”: Fun-fairs, Talks & Workshop for Parents & Children**

The captioned activities were organized by SWD in 2007 & 2008. The participants recognized the importance of family harmony and learnt how to communicate with their family members in the talks & workshop. The fun-fairs facilitated a good parent-child relationship in a joyful atmosphere. About 775 people participated in these activities.

## **2.2.7 Crime Prevention**

### **Adolescents’ Anti-Narcotics and Fight Crime Carnival (Whole year)**

Adolescents’ Anti-Narcotics and Fight Crime Carnival is held each year. Through various performances and competitions, the carnival can enhance young people’s ability to avoid and resist drugs and also provide them with the opportunities to build up self-confidence and contribute to the community.





A group of young people were performing Taekwondo in Wong Tai Sin Youth Declaration on “Say No to Drugs”.

**Table 12 Summary of participants from 2006 to 2010**

Year	2006	2007	2008	2009	2010 ( as at August)
No. of participants	2,000	4,050	4,033	1,070	1,080

**Elderly and Junior Police Call Fight Crime Ambassador Scheme**  
**(Every May/Oct)**

The Hong Kong Police Force has launched Elderly and Junior Police Call Fight Crime Ambassador Scheme since 2007. The scheme aims at training volunteering elderly citizens and adolescents to become Fight Crime Ambassador so as to promote anti-crime message in Wong Tai Sin district. Participants are also briefed with the latest situation of crime in the district.



After the ceremony, the officiating guests took a group photo with the volunteers.

**Table 13 Data of Fight Crime Ambassador from 2007 to 2010**

Year	2007	2008	2009	2010 ( as at August)
No. of participants	1,302	495	1,160	4,000

### **Fight Crime Basketball Competition** **(Every Oct/Nov)**

The above competition is held to help youths at risk and those who have taken drugs develop positive values and attitudes towards life. Its aim is to disseminate anti-crime messages to youngsters and remind them stay away from drugs at all the time.



The basketball teams were fighting for the championship in Fight Crime 3-on-3 Basketball Competition.

**Table 14 Summary of participants from 2006 to 2010**

Year	2006	2007	2008	2009	2010 ( as at August)
No. of participants	400	456	300	400	400

### **Musical Performances (Jun/Mar)**

Youngsters are recruited and participated in drama performance. The message of anti-drug is disseminated to the audiences by their strenuous effort. Youngsters are also provided with a series of anti-drug workshops in order to enhance their awareness of drug abuse.



Wong Tai Sin “Health@City” Community Musical was featured with a number of large-scale singing and dancing scenes.

**Table 15 Summary of participants from 2009 to 2010**

Event	2009	2010 ( as at August)
Musical	3,000	4,500

**Seminars & Talks (Whole year)**

Various seminars and talks are organized by Hong Kong Police Force, Wong Tai Sin District Fight Crime Committee, Wong Tai Sin District Office and other non-governmental organizations (NGOs) to disseminate fight crime, anti-drug and anti-domestic violence message to the public with a view to building up a healthy city in Wong Tai Sin district.



Guests from various parties shared their views on “how to tackle the problem of drug-using among young people in Wong Tai Sin District”.

**Table 16 Summary of participants in 2006, 2008 and 2010**

Year	2006	2008	2010 ( as at August)
No. of participants	200	500	5,240

**Corruption Prevention Activities (Every Sep/Oct/Dec)**

To prevent corruption between enterprises, residents and students, Independent Commission Against Corruption (ICAC) and Wong Tai Sin District Fight Crime Committee have organized different visits, exhibitions, games and talks to enrich their knowledge on anti-corruption law.



Students paid fullest attention to the anti-corruption information provided by ICAC.

**Table 17 Summary of participants from 2006 to 2009**

Year	2006	2007	2008	2009
No. of participants	30,000	30,186	30,060	35,110

**Family Community Cohesion Scheme (Every Apr-Jan)**

The above scheme aims at promoting anti-domestic violence message to the families in district through different activities, promotion and education. Outstanding families were awarded and invited to promote the message of harmony with the officiating guests.



Families were making heart-shaped balloons together to show their unity.

**Table 18 Summary of participants from 2009 to 2010**

Year	2009	2010 ( as at August)
No. of participants	16,206	20,426

### **Fresh Express Community Integrated Scheme (Whole year)**

The captioned scheme has to set up four district working groups for the anti-drug platform including “Fresh Express” youth clinic, a hotline for a clean community, “Fresh Express Ambassadors” training courses and 4-Panel Comic Drawing Competition, comic workshop. It aims to enhance young people’s ability to resist drugs and provide them with the opportunities to integrate into the community and develop a healthy life attitude.



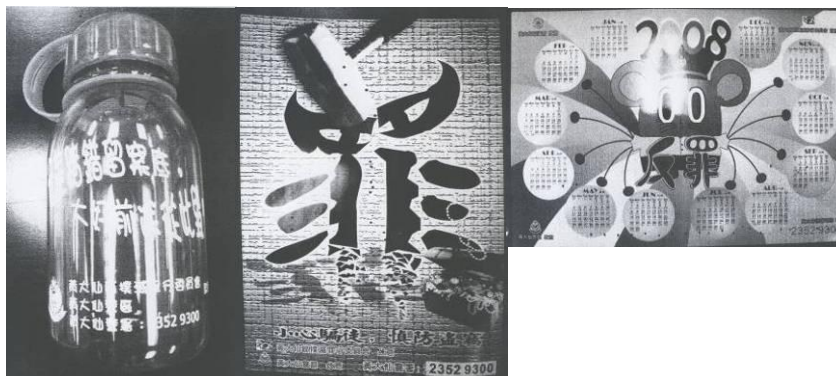
Participants learnt how to avoid and resist drugs by making puzzles.

**Table 19 Summary of participants from 2008 to 2010**

Year	2008	2009	2010 ( as at August)
No. of participants	4,679	1,000	12,526

### **Fight Crime Promotion (Whole year)**

In order to disseminate anti-crime and anti-drug messages to the residents in Wong Tai Sin district, leaflets are distributed to the public in order to raise their anti-crime awareness.



Souvenirs and posters for fight crime promotion.



**Table 20 Summary of participants from 2006 to 2010**

Year	2006	2007	2008	2010 ( as at August)
No. of participants	25,000	36,550	24,000	25,000

**Anti-drug Programmes organized by Wong Tai Sin Alliance Against Drug Abuse**

Wong Tai Sin Alliance Against Drug Abuse has organized a series of anti-drug programmes in order to ensure the safe community in Wong Tai Sin district. Some of them are listed below:

Series	Name of Programmes
1	<u>Kick off ceremony of Wong Tai Sin Alliance Against Drug Abuse and Briefing on anti-drug activities in Wong Tai Sin district</u> Participants coming from different sectors are invited to join the kick off ceremony and encouraged to support anti-drug activities in the district.
2	<u>Wong Tai Sin district anti-drug seminar</u> Over 200 participants from different sectors of the community attended the Wong Tai Sin district anti-drug seminar at Hong Kong International Trade and Exhibition Centre to discuss how to communicate with the young people and help them stay away from drugs.
3	<u>Ice hockey training for teenagers</u> To encourage the participants to make good use of their leisure time and stand firm to say no to drugs, treasure and build up the healthy life.
4	<u>“Life with Basketball” Youth Development Programme</u> To organize a team of youth who were previously influenced by sickening culture, encouraging them to establish a healthy mode of life by playing basketball.
5	<u>Anti-drugs personal story theater</u> To encourage students to build up a positive attitude and keep away from drugs by sharing with peers.

6	<p><u>“Don’t take drugs” IPSC training programme 2010</u></p> <p>Participants can polish their communication skills and develop their goals after attending the programme. It is a platform for them to share their feelings and ways to solve the difficulties together.</p>
7	<p><u>“Full of Love” anti-drugs programme</u></p> <p>The programme enhances the awareness of anti-drugs of the local residents by conducting a series of activities such as, coloring competition, folder design competition, short film making competition and visit Drug Addiction Treatment Centre.</p>
8	<p><u>Clean Campus programme</u></p> <p>The programme conducts 4 activities including 1) visiting drug educational organization 2) two nights of experience camping 3) workshop 4) designing the anti-drugs activities at school and connect with the youth in Wong Tai Sin district to promote the community participation as well as influence their friends to be far away from drugs.</p>
9	<p><u>Wong Tai Sin district anti-drug youth leadership training programme</u></p> <p>The programme establishes “Anti-drugs Ambassador Group” in primary and secondary schools to provide training and sharing activities to students. The activities not only increase students’ awareness of anti-drugs, but also widen their horizon and contribute to the community.</p>
10	<p><u>Physical test for youth</u></p> <p>To identify the hidden high-risk group in the district, a series of physical test have been conducted to the youth. This helps them improve their health and social skills.</p>
11	<p><u>“Find my dream on the stage”</u></p> <p>The youth will be recruited and trained to get rid of unhealthy lifestyle and assist them to keep away from drugs.</p>
12	<p><u>&lt;DON’T SAY YES&gt; community education programme against drug abuse</u></p> <p>To let the youth understand the consequence of drug taking through education and training workshop.</p>

13	<p><u>Against drug abuse 5 on 5 football competition</u></p> <p>Positive attitude and self-confidence is established and enhanced through the football practice and competition.</p>
14	<p><u>Wong Tai Sin District Summer Youth Programme 2010, a new generation of Self-confidence</u></p> <p>To recruit 10 to 14 years-old children and youth in district to participate in a series of activity to strengthen their positive value and reinforce their self-confidence.</p>
15	<p><u>Running for healthy life, embracing the exciting future</u></p> <p>To recruit the participants in Wong Tai Sin district to participate the 2 month-long marathon training program. The importance of healthy life promotion is a main focus during the training session.</p>



Kick off ceremony of Anti-drug Programmes



Anti-drug seminar

## 2.2.8 Suicide Prevention

### Publicity Campaign Against Suicide

SWD has produced roadside display boards to disseminate messages of treasuring lives; to encourage people to seek early professional assistance; and to promote services available. The boards have been mounted at 24 locations in Wong Tai Sin district from April 2006 to December 2010.





The roadside display boards remind people of not giving up their lives easily.

## 2.2.9 Food Safety and Environment Hygiene

### Anti-mosquito Campaign

Anti-mosquito campaign is commenced in March of each year and the overall campaign period is about 22 weeks. It is an inter-departmental function organized by Food and Environmental Hygiene Department (FEHD) in which control measures and publicity efforts will be stepped up during the campaign period. The Anti-mosquito campaign for 2010 aims to achieve the following objectives:

1. To heighten public awareness on the potential risk of dengue fever and Japanese encephalitis;
2. To encourage community participation and forge close partnership of government departments concerned in anti-mosquito work; and
3. To eliminate mosquito breeding sites.



FEHD to carry out larviciding against mosquito breeding

### Anti-rodent Campaign

Anti-rodent campaign is commenced in January of each year and the overall campaign period is about 18 weeks targeting at markets/market buildings, hawker bazaars, typhoon shelters, lanes close to food premises, other problematic spots identified in this district as well as their surroundings. The main objectives of the

campaign are as follows:-

1. To arouse public awareness on the significance of rodent control and prevention in the community.
2. To reduce rodent population in the territory.
3. To promote the participation of public in rodent prevention and control work in their premises.



Anti-rodent Seminar

### **Year-end Clean-up Operation**

Year-end clean-up operation is a major activity organized by FEHD to improve the cleanliness of living environment at the end of each year. During the whole event period, FEHD will –

- (a) carry out intensive anti-mosquito operations at old tenement buildings and other susceptible areas in the district;
- (b) step up vermin and rodent control measures in the district;
- (c) provide intensified cleansing at public toilets, public bathhouses and refuse collection points in the district;
- (d) step up cleansing operations at hygiene blackspots, including backlanes, roadside verges and lawns;
- (e) remind operators of food establishments about the importance of good hygiene standard and step up enforcement actions; and
- (f) strengthen enforcement actions and adopt the “zero-tolerance” approach against illegal posting of bills or posters, littering including improper feeding of pigeons and other feral birds, spitting and dog fouling.

### **Cleanest Estate Award Scheme**

In order to encourage the managing companies and residents of housing estates in Wong Tai Sin to improve the living environment, the Cleanest Estate Award Scheme has been organized by Wong Tai Sin District Council and Wong Tai Sin District Office on an annual basis. Both public and private housing estates are encouraged to join the scheme. The assessment would be based on 4 main areas, namely, hygiene, anti-mosquito efforts, environmental protection initiatives and greening.



Assessment of the Cleanest Estate Award Scheme

**Table 21 Number of participating estates**

Year	2006-2007	2007-2008	2009-2010	2010-2011
No. of estates	22	24	30	27

### **Anti- mosquito Pioneer Scheme**

Since mosquitoes would pose serious health problems on residents, Wong Tai Sin District Office has been organizing the anti-mosquito pioneer scheme since 2007 each year. A series of activities such as site inspection, seminars and environmental bag logo competition have been launched to disseminate anti-mosquito messages and to raise residents' awareness on the importance of a clean environment. The scheme has extended from estates to schools since 2010.



Anti-mosquito Seminar

**Table 22 Summary of events**

Year	2007-2008	2008-2009	2009-2010	2010-2011
Participating Estates/Schools	25 estates	28 estates	41 estates	42 estates 13 schools
No. of participants	1500	2000	2000	3500

### **Site visits for improving environment hygiene in Wong Tai Sin District**

Site visits with members of Food and Environmental Hygiene Committee under Wong Tai Sin District Council have been organized by Wong Tai Sin District Office each year to inspect potential hygienic blackspots and make suggestions for improvement.



DC members inspected the hygienic condition of Morse Park

## **Clean Hong Kong Campaign**

In response to the outbreak of human swine flu in 2009, the Wong Tai Sin District Working Group on Prevention and Control of Human Swine Influenza was set up in May 2009 to organize activities and disseminate message to promote the importance of cleanliness and safe community in the District. The Wong Tai Sin District Office and the Wong Tai Sin District Council organized four Area Cleansing Days to support the Clean Hong Kong Campaign between August and November 2009, which included the followings:-

- 55 private buildings without management bodies were cleansed by contractor
- 85 activities were organized, including health talks and bus parades
- Over 1,400 volunteers were recruited
- 1,425 households of the elderly were cleansed by volunteers or contractor
- 6,000 leaflets and 20,000 cleansing packs were distributed and 650 banners were displayed to promote the Clean Hong Kong Campaign



Participant distributed cleansing pack to a resident during the Area Cleansing Day

### **2.2.10 Environmental Protection**

#### **Number of trees under Government Management**

Throughout these 5 years, government departments have done a lot of projects on greening works in the district for a healthy, safe and pretty community. These planters either grow at parks or sitting-out area for leisure purpose, at housing estates or even roadside to serve as natural canopy. The following data shows an increasing trend on healthy indicator in the community.

**Table 23 Figures on no. of trees from 2006 up to 30 Sept., 2010**

Name of Dept.	1 Apr., 2005 – 31 Mar., 2006	1 Apr., 2006 – 31 Mar., 2007	1 Apr., 2007 – 31 Mar., 2008	1 Apr., 2008 – 31 Mar., 2009	1 Apr., 2009 – 31 Mar., 2010	1 Apr., 2010 – 30 Sept. 2010
Leisure & Cultural Services Department (LCSD) (roadside)	1,100	1,100	1,100	1,100	1,100	<b>1,100</b>
Highways Department. (HyD)	2,750	2,750	2,750	2,750	2,650	<b>2,600</b>
Housing Department (HD)	7,000	7,000	7,000	7,000	7,000	<b>7,000</b>

Remark: Leisure & Cultural Services Department also has implanted 9,464 nos. of trees in parks from April to September 2010

### **Number of trees under NGOs' Management**

Apart from government's effort, non-governmental organizations (NGOs) have also sought permission from government to promote greening works in the district. Though the figure is less significant than the government department, it shows a good example in cross sector co-operation project.

**Table 24 Figures on no. of trees and shrubs from April 2008 up to 30 Sept., 2010**

Name of NGOs	1 Apr., 2008 – 31 Mar., 2009	1 Apr., 2009 – 31 Mar., 2010	1 Apr., 2010 – 30 Sept. 2010
Green Power (no. of trees)	114	114	114
Green Power (no. of shrubs)	1525	1525	1525

### **Greening & Tree Planting Projects/ Activities/ Programmes organized by government departments**

Government departments have made a lot of effort in contributing a green community. Over the previous five years, Leisure & Cultural Services Department (LCSD) has organized annual planting days for beautification and family leisure purpose. Apart from LCSD, Civil Engineering Development Department (CEDD) is launching a Greening Master Plans in the district under which 1,260 and 310,000 trees and shrubs will be planted respectively at roadsides in the coming year. Last year, a series of



activities namely “Wong Tai Sin Tree Watch” were organized by Wong Tai Sin District Office. The programme helped trained up volunteers to inspect and monitor healthy condition of trees to ensure the flora could be properly grown to avoid casualties caused by falling trunks so as to provide the safe community.

**Table 25 Figures on no. of trees and shrubs from 2006 up to 30 Sept., 2010**

	1 Apr., 2005 – 31 Mar., 2006	1 Apr., 2006 – 31 Mar., 2007	1 Apr., 2007 – 31 Mar., 2008	1 Apr., 2008 – 31 Mar., 2009	1 Apr., 2009 – 31 Mar., 2010
Community Planting Programme organised by LCSD(No. of trees)	1 (500)	1 (300)	1 (200)	1 (186)	1 (300)

### **10<sup>th</sup> Anniversary Celebration – Wong Tai Sin Tree Planting Day & Green Carnival**

To celebrate the 10<sup>th</sup> Anniversary of Hong Kong reunification with China, a district tree planting day was jointly organised by LCSD and Wong Tai Sin District Office on 28 April, 2007. There were 500 participants and over 100 of trees were planted.



Wong Tai sin Tree Planting Day & Green Carnival

### **Greening & Tree Planting Projects/ Activities/ Programmes organized by NGOs**

District NGOs have done a great job to help promote a greening and healthy Wong Tai Sin through different projects. To tie in with 2008 Beijing Olympics Games and 2009 East Asian Games, a series of environmental protection activities namely “Green living of Wong Tai Sin” were held. These projects sponsored by Wong Tai Sin

District Council covered a wide range of scope under which waste collection, recycling, tree planting competition and a low carbonate lifestyle were the main themes and received wide support from general public.

**Table 26 Summary of events from 2006 up to 30 Sept., 2010**

	<b>1 Apr., 2007 – 31 Mar., 2008</b>	<b>1 Apr., 2008 – 31 Mar., 2009</b>	<b>1 Apr., 2009 – 31 Mar., 2010</b>	<b>1 Apr., 2010 – 30 Sept. 2010</b>
Name of Event	Environmental Protection DIY for a Better WTS	Green Living for 2008 Beijing Olympics Games	Green Living in WTS. Green East Asian Games	Green Living to reduce carbonate
Content	Waste Collection & Recycling	Greening Competition, Diversification of Waste Origin	Bring your own Bag and Use less plastic bags, Inspect and assess health condition of roadside trees	Greening activity, low carbonate lifestyle and diet
No. of participants	Around 10,000	Around 20,000	Around 40,000	Around 3,000 (as at 30 Sept., 2010)

### **Flower Blossom for 2008 Beijing Olympic Games**

About 500 participants together with “Green Ambassadors” joined the captioned event to plant hundred of trees at Mores Park, Wong Tai Sin.





### **Rosella Harvesting Festival**

Rosella Harvesting Festival is a planting activity using seed of Rosella, a flora originated in South East Asia recently largely introduced into Hong Kong. Fruits of Rosella are one the famous “healthy product”. The Harvesting Festival attracted over 300 participants who were anxious to learn how tea and jam be made from its fruit.



### **Seminars / Activities to promote environmental protection**

Throughout these years, Wong Tai Sin District Office has organized different field trips and seminars to raise public awareness of environmental protection. Apart from visiting valuable breeding ground of flora and furan, seminar on energy saving and how to handle waste electronic products were held to help integrate the relevant knowledge and concept into their daily life for a better tomorrow.

### **Insight HK Scheme : Watching Butterflies in Shing Mun Country Park**

The activity was held on 11 Oct., 2008 on which about 40 public paid visit to the breeding ground of butterflies where tour guide was provided to broaden participants’ knowledge on ecological system.



### **Insight HK Scheme : Visit to Ma Wan Park**

About 40 participants joined the visit to Ma Wan Park on 17 Jan., 2009 of which relics on previous Kiln at Tang Dynasty were located.



### **Insight HK Scheme : Green Living Polyhedron – Certificate Seminar by Environmental Protection Dept. cum Visit to Sai Tso Wan Recreation Ground and Kowloon Bay Waste Recycling Centre**

The visit and seminar held on 22 May, 2009 attracted 200 participants where their attention were drawn to the recycling progress of Polyhedron which was reused to make up Sai Tso Wan Recreation Ground.



### **Seminar on “A New Producer Responsibility Scheme for Waste Electrical & Electronic Equipment”**

About 200 participants attended the seminar on 16 Mar., 2010 of which briefing was delivered by Environmental Protection Department on different proposed effective ways to handle waste electrical and electronic equipment to ensure a clean and safety community.



### **Energy Saving Activities**

Same as greening work, district NGOs are enthusiastic in promoting energy saving. Through different activities, a more comprehensive environmental protection idea was accepted by the public and even incorporated into their life style. To raise our air quality by reducing pollutants, people are encouraged to use less electricity and know more about renewable energy.

### **Green Living for 2008 Beijing Olympics Games and Green Living in WTS. Green East Asian Games in 2009**

Use Less Electricity Competition were held in two consecutive years to encourage public to avoid wastage and received a good responses. Windmill design competition encouraged our adolescents the importance of renewable energy.



### **Save Energy Act Now for a Better Tomorrow**

Workshops and site visit will be held to enrich public knowledge on energy saving by using certain type fluorescent light. The project will last to Mar., 2011 of which roving exhibition with demonstration will be launched for use less electricity.



### **2.2.11 Health Promotion**

#### **Eat and Play Smart for Better Health – Get, Set, Go**

To promote healthy diet and physical activity to Hong Kong citizens, Department of Health have been organized Eat and Play Smart for Better Health – Get, Set, Go Program which held on 27 September, 2010. Wong Tai Sin District Healthy and Safe City and over 500 schools and non government organizations from different districts also join in this program as a partner to disseminate the health message. The program included the promotion of mass exercise, pledging ceremony etc.

#### **Fun for Healthy life 健康生活樂「營」「型」**

In order to recognize the importance of healthy living and encourage Wong Tai Sin citizens to adopt smart eating and healthy lifestyle, Fun for Healthy life was jointly organized by Wong Tai Sin District Healthy and Safe City, ABM Hong Kong Swatow Baptist Church Community Service Association Fung Tak Baptist Children & Youth Integrated Service, Wong Tai Sin District Office and CLP Power Hong Kong Limited for the promotion of smart eating and healthy lifestyle in Wong Tai Sin. It included a series of health talks, cookery classes, physical fitness class, cookery competition and production of recipe books. This program started from January 2009 to October 2009. Over a thousand participants joined the program.





Over a hundred participants attended the cookery competition.



The judges were scored on the attendants' dish.



The judges tasted the attendants' dish.



Physical Fitness Class



Cookery Class

### **Student Health Care Experience Program**

In order to promote the health and medical service in Hong Kong and develop the students' interest in health and medical service, Wong Tai Sin District School Liaison Committee, Wong Tai Sin District Healthy & Safe City and Our Lady of Maryknoll Hospital were collaborated to host Student Health Care Experience Program. A series of career talks, training program and health talks have been provided to the students for acquiring knowledge and experience from different health and medical service

departments, e.g. the role of occupation therapy, the equipments of physiotherapy etc.



Training Program

Student Health Care Experience Program started since 2008. This program is to be popular among the secondary schools in Wong Tai Sin. In 2010, more than 20 schools in Wong Tai Sin joined the program.



Talks were hosted by professionals



Presentation from the students



Issue certificates to students after the program



Student Health Care Experience Program Closing Ceremony



## 2.2.12 Disaster preparedness and response

### **Prevention of Human Swine Influenza**

A number of confirmed human cases of swine influenza infection have been reported in Mexico and several other countries. In order to prevent the spread of the Human Swine Influenza, Wong Tai Sin District Healthy & Safe City, TWGHs Wong Tai Sin Hospital and Wong Tai Sin District Office organized Prevention of Human Swine Influenza Talk in June 2009. It aimed to illustrate the symptoms, mode of transmission and the prevention of the Human Swine Influenza to Wong Tai Sin citizens.



Talk was hosted by doctors



Demonstrate the use of mask in a proper way

### **Prevention of Hand, Foot and Mouth Disease**

Hand, foot and mouth disease is a viral infection commonly seen in infants and children. Individual cases and outbreaks occur worldwide, more frequently in summer and early autumn. In view of this, Hand, Foot and Mouth Disease Talk have been organized by Wong Tai Sin District Healthy & Safe City and Wong Tai Sin Catholic Primary School to illustrate the symptoms, mode of transmission and prevention = to Wong Tai Sin citizens, especially for the parents.



## **2.3 Indicator 3: Programs that target high-risk groups and environments, and programs that promotes safety for vulnerable groups**

A series of the programmes that target high-risk groups/vulnerable groups have been implemented in Wong Tai Sin district in order to promote the safe community.

### **2.3.1 Elderly Safety**

From the analyses of Injury Surveillance with Trauma Code according to Ages 225-2009 (Graphs, Pages 69-71; Tables 4.1.2-4.1.6; Pages 72-76), the age group above 64 was always on the top three among all age groups which contributed to more than 20% of the total annually and corresponded proportionally to the age group demography of the Wong Tai Sin population (Page 6). Thus, the elderly is definitely a target group to be catered for all safety and health programmes and activities.

In the structure of Wong Tai Sin Healthy & Safe Community, 3 Working Groups are devoted to address safe and health issues related to the elderly, including the Elderly Safety Working Group, Elderly Services Working Group and the Rehabilitative Planning Working Group. Main themes of these Working Groups will also draw attentions of other Working Groups to road safety, estate & home safety, community education & promotion addressing the specific needs of the elderly. Fall prevention is inevitably of prime concerns for the elderly at homes or on the road. This is one of the work focus of the Elderly Safety Working Group. By keeping the elderly healthy can provide them with the faculties to stay safe from external harmful factors.

In the Wong Tai Sin District Community Diagnosis report, it was noted that the provision of quotas for the Home for the Elderly was not considered adequate. Also the service scope and quality of some of the private elderly residential homes might require attention and improvements. The accreditation scheme of Safe and Healthy Residential Homes is another work focus of the Elderly Safety Working Group.

#### **Wong Tai Sin Fall Prevention Project for the Elderly**

The captioned project began in August 2010 and will last for 6 months. It is co-organized by Social Welfare Department (SWD) & 12 Neighbourhood Elderly Centres. To reduce the risk of fall, the elders are encouraged to practice Tai Chi (10

forms) for enhancing their muscle strength, improving their gait and keeping their balance. Eliminating the potential hazards at home is also an effective way to prevent the fall, therefore, health talks on home safety & Home Environment Improvement Scheme will be conducted for the elders. Home visits by trained volunteers will be arranged to assess the frail elders' needs.

### **World Health Day—Elderly Tai Chi Performance**

In response to World Health Day 2010 and to promote physical activity to Wong Tai Sin citizens, World Health Day—Elderly Tai Chi Performance have been hosted by Wong Tai Sin District Healthy & Safe City, TWGHs Wong Tai Sin Hospital, Our Lady of Maryknoll Hospital, Wong Tai Sin District Office, Department of Health Sik Sik Yuen and non-government organizations to disseminate the health message to the citizens so as to build up the safe community in Wong Tai Sin. World Health Day—Elderly Tai Chi Performance program included Tai Chi performance, fall prevention exhibition, free blood pressure measuring, games stalls etc. Over 150 Wong Tai Sin citizens joined the Tai Chi Performance which was led by famous Wushu teacher Li Fai and more than thousand of the citizens joined the program.



Tai Chi performance



Famous Wushu teacher Li Fai hosted the  
Tai Chi Performance



Wong Tai Sin NGOs joined in  
World Health Day—Elderly Tai Chi Performance



Fall prevention exhibition



Game Stalls

## **Community Fall Prevention Program**

Statistics indicate that about 30 percentage of the elderly aged over 65 who live in Wong Tai Sin were found the fall accident record. In view of this, Community Fall Prevention Program have been launched by Wong Tai Sin District Healthy & Safe City, TWGHs Wong Tai Sin Hospital, Our Lady of Maryknoll Hospital, Wong Tai Sin District Office and non-government organizations to disseminate the fall prevention message to the elderly and raise their awareness of fall prevention so as to reduce the fall incidents and build up the safe community in Wong Tai Sin. Community Fall Prevention Program comprised of a series of the events including fall accident case referral, fall prevention roving exhibition, and promoting Tai Chi exercise to reduce the fall accident.



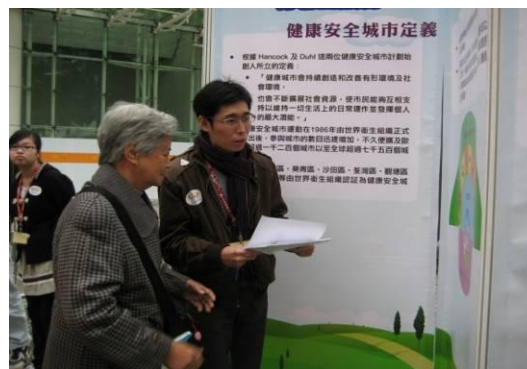
A large number of the fall accident cases were referred to Wong Tai Sin district hospitals for follow-up under the Community Fall Prevention Program.

Under the Community Fall Prevention Program, the Fall Prevention Roving Exhibition was held on 23 & 24, January 2010 to introduce the fall prevention knowledge and messages like the cause of the elderly fall, the fall prevention measures, etc. More than thousands of the citizens joined the event. Event included kick off ceremony, fall prevention exhibition, health check, health talk etc.





Fall Prevention Roving Exhibition Ceremony



The elderly was introduced of fall prevention knowledge



Health Check



Tai Chi exercise to prevent the fall accident

### **Wong Tai Sin District Elders Protection Project**

The captioned project was carried out by SWD from December 2007 to January 2008. It aims at educating family members & residents to respect & love the elders, and to protect them against physical abuse, psychological abuse, sexual abuse, financial abuse, neglect & abandonment. This Project included slogan design competition, seminar on elder abuse, volunteer training activities & community service activities. About 662 people took part in this Project.

### **High Risk Elderly Support Program**

There is a rising trend of the elderly with chronic illness and discharged elderly go back to the hospital once again recently. The lack of social support is one of the significant reasons for this trend. In light of this, High Risk Elderly Support Program have been organized by Wong Tai Sin District Healthy & Safe City, TWGHs Wong Tai Sin Hospital, Our Lady of Maryknoll Hospital, Social Welfare Department, Department of Family Medicine & Primary Health Care (Kowloon West Cluster) and

non-government organizations to provide assistance to the elderly with chronic illness and discharged elderly. It aimed to help the targets to establish a supporting network in the community and to live a meaningful life through the provision of on-going support in the form of social networking and social support services. This program was launched from September 2009 to January 2010. Three visits for the elderly with chronic illness and discharged elderly have been held for reaching the objectives of the program. In order to give the proper and quality support to the targets, training workshops which were hosted by the registered nurses have been provided for the volunteers.

**Table27 Summary of the Visits**

<b>Visit</b>	<b>No. of Participants</b>	<b>No. of Volunteer</b>	<b>Content</b>
1 <sup>st</sup> visit	54	100	<ul style="list-style-type: none"> <li>✧ To take a home visit for expressing the concern</li> <li>✧ To have a basic health assessment, e.g. measure blood pressure, psychology assessment etc.</li> </ul>
2 <sup>nd</sup> visit			<ul style="list-style-type: none"> <li>✧ To make a phone call / take a home visit for sending regard</li> <li>✧ To provide necessary assistance</li> </ul>
3 <sup>rd</sup> visit			<ul style="list-style-type: none"> <li>✧ To make a phone call</li> <li>✧ To have assessment</li> <li>✧ To keep the patients' record for follow-up action</li> </ul>

### **Happy Living Community Campaign**

The captioned campaign has been carried out from year 2005. It is organized by SWD to promote the concept of mental health among the elders, family members, young people, children & rehabilitating people. The Campaign includes distribution of manuals of promoting happy living to the professionals & public; provision of “Happy Coach” training courses; distribution of pins & videos of “Seven Tips for Happy Living”; and organization of variety show & sports day for the residents. Over 80,000 people have participated in this Campaign.



Participants of “Happy Coach” training courses were discussing how to promote happy living.



Happy coaches got ready to sow the seeds of happiness in their communities.

### **Wong Tai Sin Health Project for the Elderly**

The Health Project for the Elderly Project was held from May 2009 to January 2010. It was co-organized by Social Welfare Department (SWD) & 4 District Elderly Community Centres. Hidden & deprived elders are more vulnerable to diseases. This Project was especially designed for them to detect their health problems, with the targets of controlling diseases better, decreasing risk of complications and reducing mortality. The free health check included oral check-up, eye examination & faecal occult blood test. Services Counseling & referral would be given when diseases were detected. Health talks were also held to increase the elders' knowledge on common diseases and preventive measures. About 962 elders benefited from this Project.



The elders concentrated on the introduction of common diseases during the health talk held at Tsz Wan Shan Community Hall.



A participant was having an eye examination at the United Christian Nethersole Community Health Service Jockey Club Wo Lok Community Health Centre.



### **Safety Projects for High-risk Elderly**

Wong Tai Sin District Council has funded a lot of projects which target high-risk groups for Wong Tai Sin organizations/ associations to implement the safety programmes. These projects include the body check for the elderly, Caring Day for the Elderly, etc. Large number of Wong Tai Sin residents took part in these projects as follows.

<b>Year</b>	<b>2006</b>	<b>2007</b>	<b>2008</b>	<b>2009</b>	<b>2010</b>
Number of participants	9,519	2,320	3,220	1,800	8,749

### **2.3.2 Safety Program for the Disabled**

#### **Programme In Support of International Day of Persons with Disabilities in Wong Tai Sin District**

The captioned programme is held every year in order to promote the unity between the able-bodied and the disabled persons and to promote the improvement of services and facilities for the disabled persons. The slogan design competition, children colouring competition, volunteer training, visit to the elders by the disabled & carnival are organized in order to promote the above messages.

**Table 28 Numbers of participants from year 2006 to 2009**

<b>Year</b>	<b>2006</b>	<b>2007</b>	<b>2008</b>	<b>2009</b>
No. of participants	3,000	2,320	3,220	1,800



Both the able-bodied and the disabled enjoyed throughout the Programme

### 2.3.3 Safety & Health Program for Pre-school Children

Health Check for Pre-school Children have been organized by Wong Tai Sin District Healthy & Safe City, Our Lady of Maryknoll Hospital, Department of Family Medicine & Primary Health Care (Kowloon West Cluster), Wong Tai Sin District School Liaison Committee, Otic Foundation, School of Optometry of The Hong Kong Polytechnic University and Bishop Ford Memorial School to disseminate the children health care message to the parents and teachers and provide health check for the children. Health Check for Pre-school Children included the exhibition about the common accidents from children, the primary eye care examination, hearing evaluation and intervention, the health check and the health talk which hosted by professionals. More than a hundred parents and children joined this program.



Health Check for Pre-school Children Opening Ceremony

### 2.3.4 Healthy and Safe Hospitals

Wong Tai Sin is home to three hospitals. TWGHs Wong Tai Sin Hospital focuses on providing intensive trans-disciplinary rehabilitative training programs that enable its patients to reintegrate into society. Our Lady of Maryknoll Hospital focuses on total care for the physical, social, psychological and spiritual needs of its inpatients, outpatients and ambulatory patients. Hong Kong Buddhist Hospital provides holistic care to its patients and community. The scope of its work encompasses a wide range of inpatient and outpatient services.

Wong Tai Sin district hospitals are striving to build a culture of occupational safety & health in order to raise the staff awareness of the occupational safety & health issue and reduce the occurrence of job-related injuries. For instance, Hong Kong Buddhist Hospital scheduled maintenance, improvement and replacement to the building and equipment, so as to provide a safe environment to patients, visitors and staff such as

routine maintenance of central ventilation system, wards renovation and providing cover to the loading and unloading bay at out-patient clinic. The purchase of unusual equipment is aimed to reduce the difficulties and injuries in manual handling operations.

## Equipment



Transfer Aids



Patient Hoists



Shower Trolleys



Special Transport Vehicle

Manual handling constitutes an important part of hospital staff's daily work. Staff is valuable asset of the hospitals. Therefore, Our Lady of Maryknoll Hospital holds physical fitness classes to the staff regularly which host by senior physical fitness instructors and registered nurses. The stretching exercise and theraband exercise are taught to the participants and health message is disseminated to them through the classes. Our Lady of Maryknoll Hospital also holds health talks and video broadcasts regularly on occupational safety & health to the staff. It aimed at promoting health knowledge to the staff.

Ongoing tailor-made manual handling workshops and the four classes of train-the-trainer on 健身氣功易筋經十二式 were conducted towards staff of Hong Kong Buddhist Hospital. It aimed at enhancing safety awareness of staff in relation to the workplace and promoting a culture of regular exercise to staff. Proper posture and body mechanics in material handling were taught to our colleagues under ongoing

tailor-made manual handling workshops. For the four classes of train-the-trainer on 健身氣功易筋經十二式, around 70 ward staff had attended a 3-session training course and these trainers, with the assistance from PT staff, had implemented a daily qigong exercise program to all ward staff before work.



Theory part of the workshop



Practical part of the workshop



Exercise part of the workshop



Staff practicing Qigong-Yijinjing



Poster for pre-work exercise

Occupational safety & health initiatives, training programs and projects for the staff were planned and developed by TWGHs Wong Tai Sin Hospital, in order to ensure that all staff have acquired skill and knowledge to perform their jobs safely. The talks and programs included Radiation Safety Talk, MHO Exhibition Commissioned, Medical Laser Safety Training Courses, Prevention of Workplace Violence Seminar, Fitball Class etc.

Departments in TWGHs Wong Tai Sin Hospital are required to conduct periodic self-inspection to their workplaces to ensure a safe working environment for frontline



staff to carry out their operations. The aim of safety inspection is to identify the extent and effectiveness of existing safety measures, as well as deficiencies. Undesirable conditions recorded on the inspection checklist for improvements are required to follow up.

To prevent fire outbreak, Fire Drill and Fire Captain Training was organized by TWGHs Wong Tai Sin Hospital. Security office will conduct risk assessment to all hospital areas, warning will be issued to any user departments if non-compliance is observed. Moreover, they will also conduct monthly fire fighting drill with Fire Services Department, and annual drill for the hospital user departments. Patient and staff evacuation will be considered in the drill. Debriefing sessions were arranged after every annual drill and the emergency manual is revised to reflect changes.

Heart Health Program was also organized by TWGHs Wong Tai Sin Hospital, aiming to assess participants' health condition and then giving directions on promoting health and quality of work life. The health assessment reports are interpreted by occupational medicine specialist. When there are abnormal findings, individual staff would receive phone consultation and medical referral would be granted when needed.



OSH Corner



OSH Exhibition



Training Program



OSH Talk

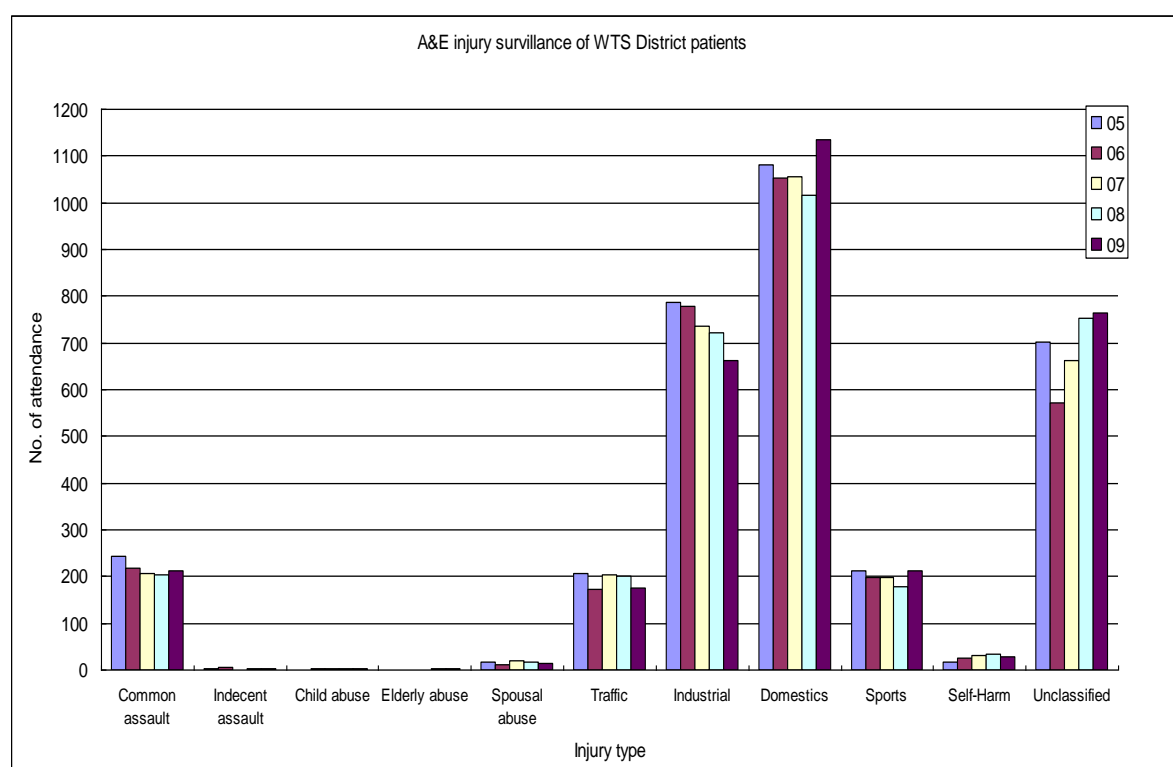
## 2.4 Indicator 4: Programs that document the frequency and causes of injuries

### 2.4.1 Injuries Surveillance by the Accident and Emergency Information System

The three hospitals in Wong Tai Sin District, namely, Buddish Hospital, Our Lady of Maryknoll Hospital and TWGHs Wong Tai Sin Hospital, do not have Accident and Emergency Departments. Wong Tai Sin residents who require emergency services will be attended by ambulances on site and transported to the nearby acute major hospitals such as Queen Elizabeth Hospital, Kwong Wah Hospital or United Christian Hospital, where they will receive emergency treatments or hospital admissions.

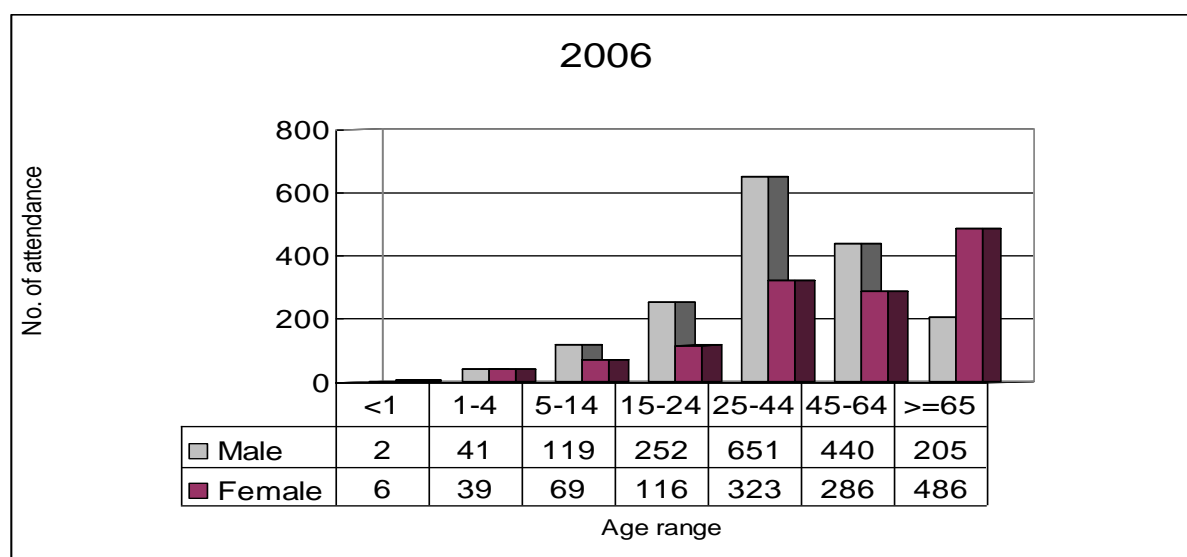
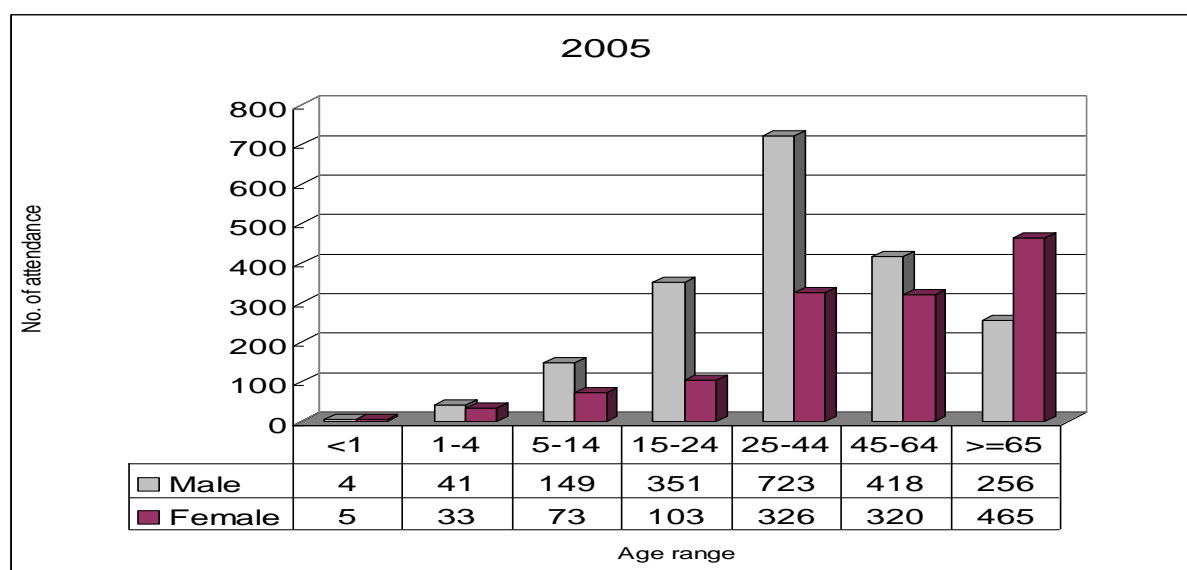
In order to provide the injury data of Wong Tai Sin residents, statistics from all the Accident and Emergency Departments of all public hospitals were collected and analyzed. Records from database of all A&E Departments, during the years 2005-2009, were identified for area code “Wong Tai Sin” so that the demographics, types and outcomes of our residents’ attendances can be retrieved and categorized.

The available data retrieved from all A&E Departments, albeit indicative, were analyzed in order to provide useful information and trends for future planning, implementation and monitoring of injury prevention programs.

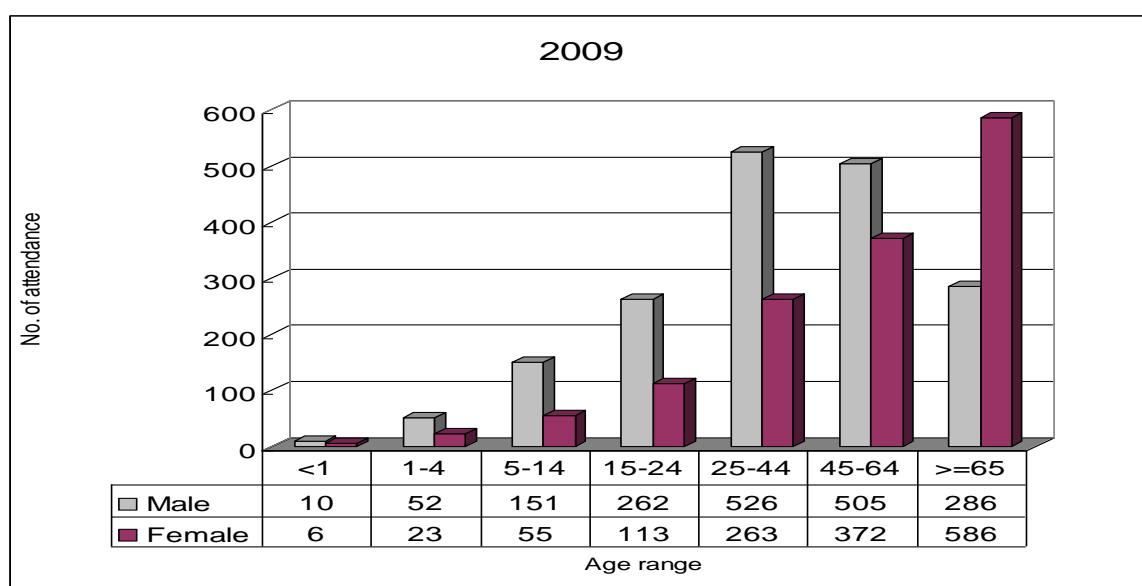
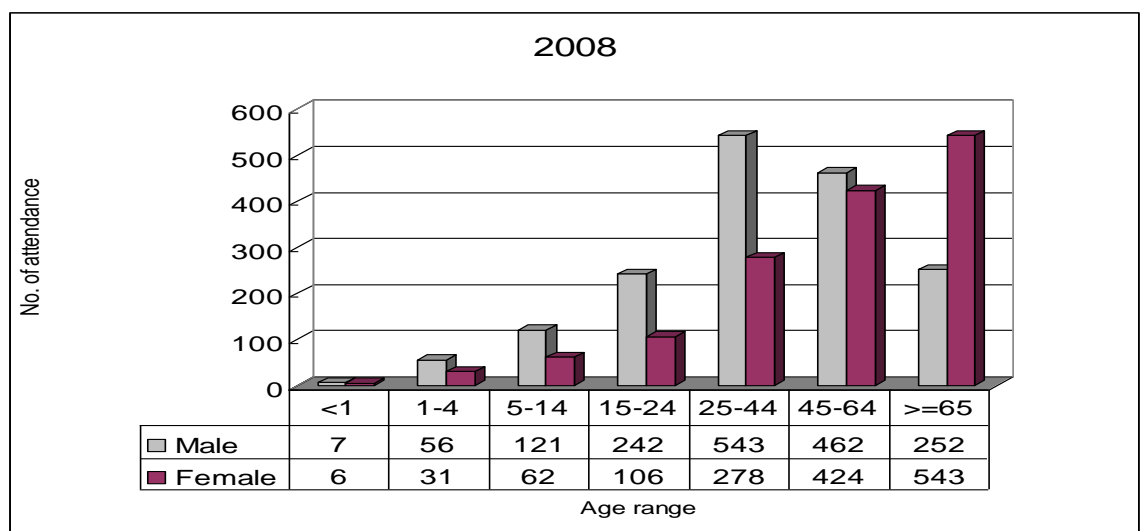
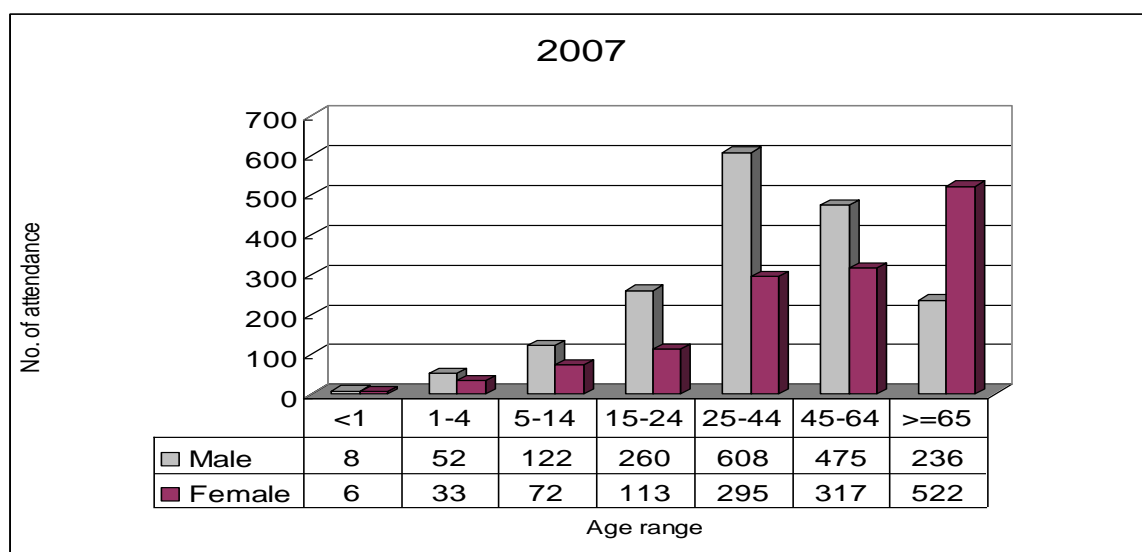


**Table29 Table of Injury Surveillance (2005-2009)**

Year	Common assault	Indecent assault	Child abuse	Elderly abuse	Spousal abuse	Traffic	Industrial	Domestics	Sports	Self-Harm	Unclassified	Total
05	243	3	1	0	16	207	787	1082	211	16	701	3267
06	219	5	4	0	10	172	779	1053	197	25	571	3035
07	207	1	2	1	21	205	737	1055	198	31	661	3119
08	205	2	4	2	17	200	721	1015	178	35	754	3133
09	211	3	4	3	13	175	661	1135	213	28	764	3210







**Table 30 Trauma Code According to Ages- 2005:**

Age	Common assault	Indecent assault	Child abuse	Spousal abuse	Traffic	Industrial	Domestics	Sports	Self-Harm	Unclassified	Total	Age group as % of total
<1	0	0	0	0	1	0	7	0	0	1	9	0.28%
% within age group	0.00%	0.00%	0.00%	0.00%	11.11%	0.00%	77.78%	0.00%	0.00%	11.11%		
% within Trauma code	0.00%	0.00%	0.00%	0.00%	0.48%	0.00%	0.65%	0.00%	0.00%	0.14%		
1-4	0	0	0	0	4	0	49	2	0	19	74	2.27%
% within age group	0.00%	0.00%	0.00%	0.00%	5.41%	0.00%	66.22%	2.70%	0.00%	25.68%		
% within Trauma code	0.00%	0.00%	0.00%	0.00%	1.93%	0.00%	4.53%	0.95%	0.00%	2.71%		
5-14	14	0	0	0	10	1	87	39	0	71	222	6.80%
% within age group	6.31%	0.00%	0.00%	0.00%	4.50%	0.45%	39.19%	17.57%	0.00%	31.98%		
% within Trauma code	5.76%	0.00%	0.00%	0.00%	4.83%	0.13%	8.04%	18.48%	0.00%	10.13%		
15-24	68	1	1	0	30	99	78	95	2	80	454	13.90%
% within age group	14.98%	0.22%	0.22%	0.00%	6.61%	21.81%	17.18%	20.93%	0.44%	17.62%		
% within Trauma code	27.98%	33.33%	100.00%	0.00%	14.49%	12.58%	7.21%	45.02%	12.50%	11.41%		
25-44	83	1	0	8	94	389	202	63	8	201	1049	32.11%
% within age group	7.91%	0.10%	0.00%	0.76%	8.96%	37.08%	19.26%	6.01%	0.76%	19.16%		
% within Trauma code	34.16%	33.33%	0.00%	50.00%	45.41%	49.43%	18.67%	29.86%	50.00%	28.67%		
45-64	59	1	0	8	43	279	194	9	2	143	738	22.59%
% within age group	7.99%	0.14%	0.00%	1.08%	5.83%	37.80%	26.29%	1.22%	0.27%	19.38%		
% within Trauma code	24.28%	33.33%	0.00%	50.00%	20.77%	35.45%	17.93%	4.27%	12.50%	20.40%		
>64	19	0	0	0	25	19	465	3	4	186	721	22.07%
% within age group	2.64%	0.00%	0.00%	0.00%	3.47%	2.64%	64.49%	0.42%	0.55%	25.80%		
% within Trauma code	7.82%	0.00%	0.00%	0.00%	12.08%	2.41%	42.98%	1.42%	25.00%	26.53%		
Total	243	3	1	16	207	787	1082	211	16	701	3267	100.00%
Injury type as % of total	7.44%	0.09%	0.03%	0.49%	6.34%	24.09%	33.12%	6.46%	0.49%	21.46%	100.00%	

**Table 31 Trauma Code According Ages- 2006:**

Age	Common assault	Indecent assault	Child abuse	Spousal abuse	Traffic	Industrial	Domestics	Sports	Self-Harm	Unclassified	Total	Age group as % of total
<1	0	0	0	0	1	0	5	0	0	2	8	0.26%
% within age group	0.00%	0.00%	0.00%	0.00%	12.50%	0.00%	62.50%	0.00%	0.00%	25.00%		
% within Trauma code	0.00%	0.00%	0.00%	0.00%	0.58%	0.00%	0.47%	0.00%	0.00%	0.35%		
1-4	0	0	1	0	2	1	57	1	1	17	80	2.64%
% within age group	0.00%	0.00%	1.25%	0.00%	2.50%	1.25%	71.25%	1.25%	1.25%	21.25%		
% within Trauma code	0.00%	0.00%	25.00%	0.00%	1.16%	0.13%	5.41%	0.51%	4.00%	2.98%		
5-14	16	1	3	0	10	0	80	37	2	39	188	6.19%
% within age group	8.51%	0.53%	1.60%	0.00%	5.32%	0.00%	42.55%	19.68%	1.06%	20.74%		
% within Trauma code	7.31%	20.00%	75.00%	0.00%	5.81%	0.00%	7.60%	18.78%	8.00%	6.83%		
15-24	43	1	0	1	16	92	75	67	7	66	368	12.13%
% within age group	11.68%	0.27%	0.00%	0.27%	4.35%	25.00%	20.38%	18.21%	1.90%	17.93%		
% within Trauma code	19.63%	20.00%	0.00%	10.00%	9.30%	11.81%	7.12%	34.01%	28.00%	11.56%		
25-44	85	0	0	7	91	389	185	61	6	150	974	32.09%
% within age group	8.73%	0.00%	0.00%	0.72%	9.34%	39.94%	18.99%	6.26%	0.62%	15.40%		
% within Trauma code	38.81%	0.00%	0.00%	70.00%	52.91%	49.94%	17.57%	30.96%	24.00%	26.27%		
45-64	66	2	0	1	40	291	154	25	5	142	726	23.92%
% within age group	9.09%	0.28%	0.00%	0.14%	5.51%	40.08%	21.21%	3.44%	0.69%	19.56%		
% within Trauma code	30.14%	40.00%	0.00%	10.00%	23.26%	37.36%	14.62%	12.69%	20.00%	24.87%		
>64	9	1	0	1	12	6	497	6	4	155	691	22.77%
% within age group	1.30%	0.14%	0.00%	0.14%	1.74%	0.87%	71.92%	0.87%	0.58%	22.43%		
% within Trauma code	4.11%	20.00%	0.00%	10.00%	6.98%	0.77%	47.20%	3.05%	16.00%	27.15%		
Total	219	5	4	10	172	779	1053	197	25	571	3035	100.00%
Injury type as % of total	7.22%	0.16%	0.13%	0.33%	5.67%	25.67%	34.70%	6.49%	0.82%	18.81%	100.00%	

**Table 32 Trauma Code According Ages- 2007:**

Age	Common assault	Indecent assault	Child abuse	Elderly abuse	Spousal abuse	Traffic	Industrial	Domestics	Sports	Self-Harm	Unclassified	Total	Age group as % of total
<1	0	0	0	0	0	1	0	8	0	0	5	14	0.45%
% within age group	0.00%	0.00%	0.00%	0.00%	0.00%	7.14%	0.00%	57.14%	0.00%	0.00%	35.71%		
% within Trauma code	0.00%	0.00%	0.00%	0.00%	0.00%	0.49%	0.00%	0.76%	0.00%	0.00%	0.76%		
1-4	0	0	1	0	0	1	0	48	0	1	34	85	2.73%
% within age group	0.00%	0.00%	1.18%	0.00%	0.00%	1.18%	0.00%	56.47%	0.00%	1.18%	40.00%		
% within Trauma code	0.00%	0.00%	50.00%	0.00%	0.00%	0.49%	0.00%	4.55%	0.00%	3.23%	5.14%		
5-14	17	0	0	0	0	8	0	84	34	0	51	194	6.22%
% within age group	8.76%	0.00%	0.00%	0.00%	0.00%	4.12%	0.00%	43.30%	17.53%	0.00%	26.29%		
% within Trauma code	8.21%	0.00%	0.00%	0.00%	0.00%	3.90%	0.00%	7.96%	17.17%	0.00%	7.72%		
15-24	43	0	1	0	0	33	91	56	76	8	65	373	11.96%
% within age group	11.53%	0.00%	0.27%	0.00%	0.00%	8.85%	24.40%	15.01%	20.38%	2.14%	17.43%		
% within Trauma code	20.77%	0.00%	50.00%	0.00%	0.00%	16.10%	12.35%	5.31%	38.38%	25.81%	9.83%		
25-44	84	0	0	0	14	94	322	152	71	7	159	903	28.95%
% within age group	9.30%	0.00%	0.00%	0.00%	1.55%	10.41%	35.66%	16.83%	7.86%	0.78%	17.61%		
% within Trauma code	40.58%	0.00%	0.00%	0.00%	66.67%	45.85%	43.69%	14.41%	35.86%	22.58%	24.05%		
45-64	49	1	0	0	5	56	316	179	15	9	162	792	25.39%
% within age group	6.19%	0.13%	0.00%	0.00%	0.63%	7.07%	39.90%	22.60%	1.89%	1.14%	20.45%		
% within Trauma code	23.67%	100.00%	0.00%	0.00%	23.81%	27.32%	42.88%	16.97%	7.58%	29.03%	24.51%		
>64	14	0	0	1	2	12	8	528	2	6	185	758	24.30%
% within age group	1.85%	0.00%	0.00%	0.13%	0.26%	1.58%	1.06%	69.66%	0.26%	0.79%	24.41%		
% within Trauma code	6.76%	0.00%	0.00%	100.00	9.52%	5.85%	1.09%	50.05%	1.01%	19.35%	27.99%		
Total	207	1	2	1	21	205	737	1055	198	31	661	3119	100.00%
Injury type as % of total	6.64%	0.03%	0.06%	0.03%	0.67%	6.57%	23.63%	33.82%	6.35%	0.99%	21.19%	100.00%	

**Table 33 Trauma Code According Ages- 2008:**

Age	Common assault	Indecent assault	Child abuse	Elderly abuse	Spousal abuse	Traffic	Industrial	Domestics	Sports	Self-Harm	Unclassified	Total	Age group
<1	0	0	0	0	0	0	0	9	0	0	4	13	0.41%
% within age group	0.00%	0.00%	0.00%	0.00%	0.00%	0.00%	0.00%	69.23%	0.00%	0.00%	30.77%		
% within Trauma code	0.00%	0.00%	0.00%	0.00%	0.00%	0.00%	0.00%	0.89%	0.00%	0.00%	0.53%		
1-4	0	0	0	0	0	2	0	53	1	0	31	87	2.78%
% within age group	0.00%	0.00%	0.00%	0.00%	0.00%	2.30%	0.00%	60.92%	1.15%	0.00%	35.63%		
% within Trauma code	0.00%	0.00%	0.00%	0.00%	0.00%	1.00%	0.00%	5.22%	0.56%	0.00%	4.11%		
5-14	14	0	2	0	0	11	0	57	33	2	64	183	5.84%
% within age group	7.65%	0.00%	1.09%	0.00%	0.00%	6.01%	0.00%	31.15%	18.03%	1.09%	34.97%		
% within Trauma code	6.83%	0.00%	50.00%	0.00%	0.00%	5.50%	0.00%	5.62%	18.54%	5.71%	8.49%		
15-24	28	0	2	0	0	21	91	60	75	4	67	348	11.11%
% within age group	4.02%	0.00%	0.57%	0.00%	0.00%	6.03%	26.15%	17.24%	21.55%	1.15%	19.25%		
% within Trauma code	13.66%	0.00%	50.00%	0.00%	0.00%	10.50%	12.62%	5.91%	42.13%	11.43%	8.89%		
25-44	87	0	0	0	10	72	279	140	56	10	167	821	26.20%
% within age group	10.60%	0.00%	0.00%	0.00%	1.22%	8.77%	33.98%	17.05%	6.82%	1.22%	20.34%		
% within Trauma code	42.44%	0.00%	0.00%	0.00%	58.82%	36.00%	38.70%	13.79%	31.46%	28.57%	22.15%		
45-64	57	2	0	0	3	64	343	190	11	9	207	886	28.28%
% within age group	6.43%	0.23%	0.00%	0.00%	0.34%	7.22%	38.71%	21.44%	1.24%	1.02%	23.36%		
% within Trauma code	27.80%	100.00%	0.00%	0.00%	17.65%	32.00%	47.57%	18.72%	6.18%	25.71%	27.45%		
>64	19	0	0	2	4	30	8	506	2	10	214	795	25.38%
% within age group	2.39%	0.00%	0.00%	0.25%	0.50%	3.77%	1.01%	63.65%	0.25%	1.26%	26.92%		
% within Trauma code	9.27%	0.00%	0.00%	100.00%	23.53%	15.00%	1.11%	49.85%	1.12%	28.57%	28.38%		
Total	205	2	4	2	17	200	721	1015	178	35	754	3133	100.00%
Injury type as % of total	6.54%	0.06%	0.13%	0.06%	0.54%	6.38%	23.01%	32.40%	5.68%	1.12%	24.07%	100.00	

**Table 34 Trauma Code According to Ages- 2009:**

Age	Common assault	Indecent assault	Child abuse	Elderly abuse	Spousal abuse	Traffic	Industrial	Domestics	Sports	Self-Harm	Unclassified	Total	Age group as % of total
<1	0	0	0	0	0	3	0	9	0	0	4	16	0.50%
% within age group	0.00%	0.00%	0.00%	0.00%	0.00%	18.75%	0.00%	56.25%	0.00%	0.00%	25.00%		
% within Trauma code	0.00%	0.00%	0.00%	0.00%	0.00%	1.71%	0.00%	0.79%	0.00%	0.00%	0.52%		
1-4	1	0	1	0	0	0	0	45	2	0	26	75	2.34%
% within age group	1.33%	0.00%	1.33%	0.00%	0.00%	0.00%	0.00%	60.00%	2.67%	0.00%	34.67%		
% within Trauma code	0.47%	0.00%	25.00%	0.00%	0.00%	0.00%	0.00%	3.96%	0.94%	0.00%	3.40%		
5-14	15	0	3	0	0	6	0	74	39	2	67	206	6.42%
% within age group	7.28%	0.00%	1.46%	0.00%	0.00%	2.91%	0.00%	35.92%	18.93%	0.97%	32.52%		
% within Trauma code	7.11%	0.00%	75.00%	0.00%	0.00%	3.43%	0.00%	6.52%	18.31%	7.14%	8.77%		
15-24	32	0	0	0	1	26	76	68	88	3	81	375	11.68%
% within age group	8.53%	0.00%	0.00%	0.00%	0.27%	6.93%	20.27%	18.13%	23.47%	0.80%	21.60%		
% within Trauma code	15.17%	0.00%	0.00%	0.00%	7.69%	14.86%	11.50%	5.99%	41.31%	10.71%	10.60%		
25-44	76	2	0	0	8	59	298	140	62	8	136	789	24.58%
% within age group	9.63%	0.25%	0.00%	0.00%	1.01%	7.48%	37.77%	17.74%	7.86%	1.01%	17.24%		
% within Trauma code	36.02%	66.67%	0.00%	0.00%	61.54%	33.71%	45.08%	12.33%	29.11%	28.57%	17.80%		
45-64	67	1	0	0	2	60	281	238	22	8	198	877	27.32%
% within age group	7.64%	0.11%	0.00%	0.00%	0.23%	6.84%	32.04%	27.14%	2.51%	0.91%	22.58%		
% within Trauma code	31.75%	33.33%	0.00%	0.00%	15.38%	34.29%	42.51%	20.97%	10.33%	28.57%	25.92%		
>64	20	0	0	3	2	21	6	561	0	7	252	872	27.17%
% within age group	2.29%	0.00%	0.00%	0.34%	0.23%	2.41%	0.69%	64.33%	0.00%	0.80%	28.90%		
% within Trauma code	9.48%	0.00%	0.00%	100.00%	15.38%	12.00%	0.91%	49.43%	0.00%	25.00%	32.98%		
Total	211	3	4	3	13	175	661	1135	213	28	764	3210	100.00%
Injury type as % of total	6.57%	0.09%	0.12%	0.09%	0.40%	5.45%	20.59%	35.36%	6.64%	0.87%	23.80%	100.00%	

In the interpretation of statistical data retrieved from a computer database, the accuracy of data coding will affect the resulting figures. Random manual sampling can help better understanding of the actual situation. Supplementation from data collected by other means can further clarify the analysis. However, its value in providing a pattern recognition or trend analysis is beyond doubt.



#### **2.4.2 Wong Tai Sin District Traffic Accident Injuries Numbers (January 2006 - August 2010) from Hong Kong Police Force**

Wong Tai Sin district traffic accident injuries number keeps in low. It reveals that road safety messages are well received by Wong Tai Sin residents.

**Table 35 Summary of Traffic Accident Injuries Number**

Year	2006	2007	2008	2009	2010 ( as at August)
Fatal	3	7	6	1	1
Serious	83	103	83	93	56
Slight	447	514	477	442	269
Total	533	624	566	536	326

#### **2.4.3 Wong Tai Sin district Fire Accident Numbers**

From 2006 to 2009, the number of fire accident in Wong Tai Sin district has steadily decreased from 448 to 397. It indicates that Wong Tai Sin residents are increasingly aware of the importance of fire safety.

**Table 36 Number of fire accident cases in Wong Tai Sin district**

Year	2006	2007	2008	2009	2010 (as at Aug 2010)
No of case	448	446	435	397	262

#### **2.4.4 Wong Tai Sin district Drug and Crime Numbers**

From 2006 to now, the number of crime and drug cases in Wong Tai Sin district has steadily decreased from 4,117 to 1,790 and from 110 to 42 respectively. It reveals that Wong Tai Sin residents are increasingly aware of anti-crime and anti-drug messages.

**Table37 Number of crime and drug cases in Wong Tai Sin district**

Year	2006	2007	2008	2009	2010 ( as at August)
No. of crime	4,117	3,933	3,776	3,522	1,790
No. of drug	110	118	117	102	42
No. of injuries from crime	368	402	416	349	175

## **2.5 Indicator 5: Evaluation measures to assess their programs, processes and effects of change**

With the participations of various partners of the Safe Community in Wong Tai Sin district, mechanisms have been developed to plan, implement, evaluate, review and further develop subsequent projects. The followings report the methodologies employed and some of the performance outcomes of projects conducted so far.

### **2.5.1 Epidemiological Statistics Analysis**

In order to study evaluation comparisons with other districts in Hong Kong, generic/baseline data can be obtained from the Government and its departments. Reference can also be made to research results from academic institutions as well as surveys conducted by Non-government Organizations. The Population Census is a rich source of information that will indirectly reflect socio-economic changes and large scale programs or processes being carried out in the districts.

Utilization of such method is shown in Introduction where district profile and demographic characteristics are recorded using 2006 Population By-census. Such data will form the basis for new information obtained in subsequent census to demonstrate the changes and trends of Wong Tai Sin District.

### **2.5.2 Computer Management System**

Injury surveillance registered in all Accident & Emergency departments can be obtained from the computer data warehouse of the Hospital Authority. A Clinical Management System is now in place for patients' medical records be scanned and transformed into data for statistical analysis. With the advancement in information technology, injury map can now be produced using Geographic Information System (GIS) for map navigation, geo-coding, location search and spatial analysis of thematic map on injury densities. This intelligent system is now being adopted by A&E departments in Hong Kong and will enhance not only data accuracy but also indicate areas that will require attention and actions of the district.

Such method is adopted in collection of data for residents of Wong Tai Sin district when they are admitted to A&E departments. As there is no A&E service in our District, supplementary information will be needed from other sources such as Police Department, Fire Services Department and others to enrich local data for incidents actually occurring in the District.

### **2.5.3 Program Survey Evaluation & Improvement Measures Monitoring**

As illustrated in programs described for Indicators 2 and 3, numbers of programs conducted and number people attending each program are routinely recorded. Questionnaire surveys were conducted for programs in order to document satisfactions, suggestions and areas for improvements. These feedbacks will help the planning and designs of future projects and implementation logistics.

Also, follow-up studies will be conducted to obtain pre-activity and post-activity information of any structural or behavioral changes. Examples of such evaluation measures of some program are shown as follows.

#### **Traffic Improvement Works in Wong Tai Sin for Improving Road Safety (January 2008 - August 2010) from Transport Department and Highways Department**

Both Transport Department and Highways Department have carried out traffic improvement works in Wong Tai Sin district in order to improve road safety. The relevant works from January 2008 - August 2010 are listed as follows:

<b>Description/ Ambit of Project</b>	<b>Location</b>	<b>(Proposed) Completion Date</b>	<b>Achievement</b>
One-way traffic flow management scheme	Yuk Wah Street	Mid 2008	Improving the safety of pedestrians
Cautionary crossing	Fung Shing Street near King Kung House	August 2008	
Zebra crossing	Fung Shing Street near Ming Lai House	Mid 2010	
Zebra crossing	King Fuk Street near King Tai Street	October 2008	
Enlargement of Refuge Island	Tseuk Luk Street / King Fuk Street	Mid 2009	
Cautionary Crossing	Tai Shing Street near Tai Tong Street	3 <sup>rd</sup> quarter 2009	
Additional footpath	Tung Kwong Road near Lok Sin Road	End 2009	

Zebra Crossing	Tsz Wan Shan Road near Kei Tsz Primary School	End 2009	
Zebra Crossing	Yuk Wah Street near Yuk Wah Crescent	March 2010	
Signalized crossing	Clear Water Bay Road near Good Hope School	April 2010	

### **Home Safety Improvement Works**

Wong Tai Sin District Council (WTSDC) and government departments show great concern in improving the living standard and environment for Wong Tai Sin residents so as to build up the safe community. Suggestions and comments, including those collected from Quality Building Management Competition (QBMC), are provided on housing related issues, such as maintenance of buildings and unauthorized building works.



Members of Housing Committee attended the site visit at Tung Tau Cottage East, suggesting Housing Department to install an elevator for the Estate.

**Table 38: Number of housing related issues discussed by WTSDC from 2007 up to now**

Year	2007	2008	2009	2010
Number of housing related issues discussed	14	16	25	15(Jan-June)

## **Road & Leisure Place Safety Improvement Works**

Since 2007, the District Facilities Management Committee has been funded to implement district-based works projects to improve local facilities under the District Minor Works Programme. Up to August 2010, 21 projects which aimed to improve the safety environment in Wong Tai Sin District have been completed. These projects included the improvement of walking trails and rear lanes, provision of handrails and anti-skid strips to staircases, installation of Braille floor plan in library and replacement and improvement of facilities at playgrounds and parks.



Before Works



After Works

Refurbishment of Ngau Chi Wan Village Children Playground completed in January 2010.



Before Works



After Works

Improvement of walking trail at Tsz Wan Shan completed in February 2010.

## 2.6 Indicator 6: Ongoing participation in national and international Safe Community networks

Wong Tai Sin District Healthy and Safe City is committed in building up a Safe Community by sharing experience with other collaborative parties in the community. Our local experience is also exchanged to other partners of international safe community.

### Summary of Important Events

Date	Experience Exchange Activities	Presentation/ Articles
23-26 Oct 2008	<p>The 3<sup>rd</sup> Global Conference of the Alliance for Healthy City in Ichikawa City, Japan</p>  	Development of the China Hong Kong Chapter





<p>26 May 2009</p>	<p>Redesignation Ceremony of Tuen Mun Safe Community</p> 	
<p>27 May 2009</p>	<p>Visit to “Sai Kung Healthy &amp; Safe City”</p> 	

<p>18 - 20 Oct 2009</p>	<p>The 5th Asian Regional Conference on Safe Communities and National Working Conference on Safe Communities in Beijing, China.</p> <div data-bbox="504 351 861 604" data-label="Image"> </div> <div data-bbox="898 351 1249 604" data-label="Image"> </div> <div data-bbox="504 629 868 902" data-label="Image"> </div> <div data-bbox="898 629 1249 902" data-label="Image"> </div>	<p>Safety, Health and Harmony</p>
<p>29 Oct 2009</p>	<p>The 5th China Hong Kong Safe and Healthy Community Network Annual Conference at Hong Kong Convention and Exhibition Centre</p> <div data-bbox="504 1088 1102 1485" data-label="Image"> </div>	

30 Oct 2009

Representatives of World Health Organization met with members of the Wong Tai Sin District Healthy & Safe City to understand the implementation of "Wong Tai Sin Safe Community"



<p>31 Oct 2009</p>	<p>Redesignation Ceremony of Sai Kung Safe Community</p> 	
<p>23-26 Mar 2010</p>	<p>The 19<sup>th</sup> international Conference on Safe Communities in Suwon, Korea</p> 	<p>Sustainability of Safe Community Programs</p>



16 Nov 2010

The 6<sup>th</sup> China Hong Kong Safe and Healthy Community  
Network Annual Conference at YMCA of Hong Kong



### **3. Conclusion & the Way Forward**

#### **3.1 Conclusion**

With the leadership and coordinating roles of the District Council, together with the collaborations of government departments, public institutions, non-government organizations, private enterprises and active local leaders, Wong Tai Sin District have actively promoted and participated in programs and projects related to the health and safety of its residents even before the establishment of the Wong Tai Sin Healthy and Safe City (WTS H&S City).

In the last 3 years since its inauguration, WTS H&S City further strengthens the impetus and acts as a complimentary platform for key stakeholders to deliberate, formulate, implement and monitor both health and safe issues of significance affecting our residents. Integrated approach and community participation are fundamental attributes of the Healthy & Safe City approach. It will avoid duplication of efforts and increase cooperation and coordination among contributing parties. It will lead to cost-effective solutions, synergy between activities and substantial benefits in terms of resource sharing. The best and most efficient place of such integration include schools, hospitals, workplaces, markets, charitable organizations where same values and shared visions for common action are already in place.

In dealing with both health and safe issues, a life course development framework is our blueprint. This framework will be adopted for the construction of our health and safety project coverage and priorities. It will define the health and safety trajectories over an individual's lifetime and guide new approaches to policy, practice and research. It offers a conceptual model for health and safety development which might interact with risk factors, protective factors, early-life experiences influencing people's long-term health, disease outcome and personal as well as community safety. Moreover, interactions between the individuals and environment characteristic to the District are important factors contributing to health and safety risks of our residents.

In the coming years, for safety issues, a stronger social network will be put in place so that a friendly and cohesive community can facilitate better mutual neighborhood support in the Housing Estates, especially where there are high numbers of elderly and children residents with working adults. Barrier-free access together with safe road and traffic facilities for traveling to public recreation grounds and health institutions



are priority areas in view of the high numbers of slope streets and elderly in the District. It is our belief that a healthy individual will be more resilient towards adversities/stresses, physical or psychological, arising from the environment. Improvements of our environments will provide guarantees in the protection of individual health and safety; and hence, ensuring the full potentials of all individuals to develop and enjoy their lives and to cultivate the spirit of harmonious community.

Decisions and designs of future endeavors and programs of the District must focus on and utilize the demographic, geographic and social characteristics of the local situations. Respect and attention must also be paid to the cultural and traditional features of the District where a cohesive Chinese community, values of filial piety and an ageing/dependent population are eminent. The Report of Community Diagnosis commissioned by WTS H&S City and recently completed by Centre for Health Education and Health Promotion, Faculty of Medicine, School of Public Health & Primary Care, the Chinese University of Hong Kong will provide additional researched materials for our in-depth considerations and actions for the improvements of the health and safe environments of the District. Continuity and sustainability of all these programs are essential for the prudent and best use of limited public resources and the realization of the effectiveness of our proposed actions or interventions. The Wong Tai Sin district looks forward to joining the Safe Communities so that experiences can be shared and lessons learned from expert colleagues in other districts in Hong Kong and overseas.

## **2.5 The Way Forward**

### Sustainability in Health & Safety Assessments

The WTS H&S City will continue to evaluate the health and safety needs of the WTS District. As the demographic and economic scenes will not cease to evolve, the social and environmental factors affecting health and safety will keep on changing. The current approach, such as the Injury Surveillance system, must be better organized so that a true picture reflecting the real situations can be developed. New monitoring models will also be studied to evaluate its feasibility for local application. The way of program evaluation and effectiveness scoring will also require closer scrutiny and improvements.

### Sustainability in Program Developments

Within the Safe Communities, new concepts/ideas and programmes/projects are being shared among peers. These will provide insights and reflections of the WTS H&S City Committee and Working Groups for further thoughts and applications of these innovative resources to suit our local settings. Activities in Indicator 6 will certainly fulfill such functions and stimulate local think-tanks to develop their own strategies. WTS H&S City will seize every opportunity in participating in this knowledge exchange and experience sharing activities in order to enrich its scope and levels of program/project developments.

For intermediate term purpose, more specific programs will be designed for both genders. Focus projects for psychological health will be considered since mental illnesses/stresses can undoubtedly disrupt family or societal safety.

### Sustainability in Community Partnerships

WTS H&S City will continue its founding principle that it will collaborate with all local stakeholders in the promotion/realization of health and safety for all residents in the community. Our plan, that is currently underway, to further reaching out into the community can be consolidated by the proposed relocation of the Secretariat Office to a more accessible venue where our partners and residents can have more convenient receptions by WTS H&S City. A closer link, in both physical and literal terms, will surely strengthen a more interactive relationship; and hence, a more long-lasting interdependent partnership.

### Sustainability in Professional Credibility

With the guidance of the Occupational and Health Council, WTS H&S City will embark on the accreditation schemes for Safe & Healthy Estate, Safe & Healthy Residential Care Home, Safe & Healthy School and Safe & Healthy Hospital for such facilities within the District. These accreditation schemes will benchmark our achievements with international standards through external and professional assessments. It will solicit welcomed receptions by those parties with potentials to participate when successful accreditations and due recognitions have been demonstrated. This endeavor will be a long-term process that can only be completed by phases and taken in stages.

### Sustainability in Resource Acquisitions

Interest and enthusiasm of community leaders, government officials, professional experts, volunteer advocates and proactive residents are the driving forces to reinforce the health and safety of the local citizens. In order to ensure a healthy financial support for the implementation and operations of the programs/projects and activities, WTS H&S City has recently founded the “Chairman’ Club” where sponsorships are being obtained from community celebrities, commercial/business elites and charitable personnel. This will contribute towards the pooled resources where government funds continue to be a major source of support.

### Sustainability in Peer Recognitions

Announcements or circulations of WTS H&S City’s achievements can invite peer opinions and recognition. In addition to publicizing our activities via the present channels such as district newspapers, local media and Safe Communities seminars, a website will be uploaded for wider paperless circulation. Involvements of academic or professional bodies or personnel in researching significant issues for WTS District can help raise our status so that WTS H&S City will not only be there to serve but to lead as well.